

FEATURES

These power inductors have low DC resistance and large permissible DC current with high reliability.

These power inductors can be directly mounted with special treated electrodes. Tape and reel packages are available for auto mounting machine.

APPLICATIONS

For the smoothing circuit of DC-DC converter, as a choke coil or chopper coil. Suitable for use in power lines of camcorder, LCD set, OA equipment, notebook computer, PDA, and small size communication equipment.

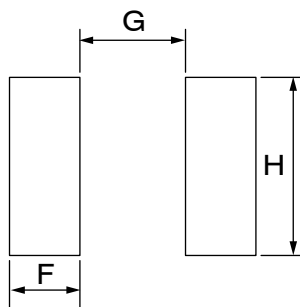
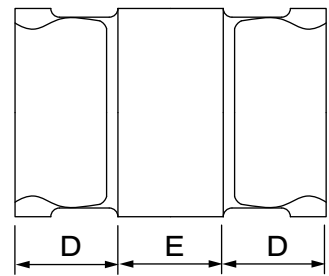
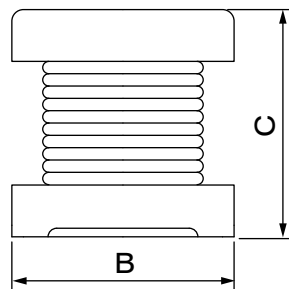
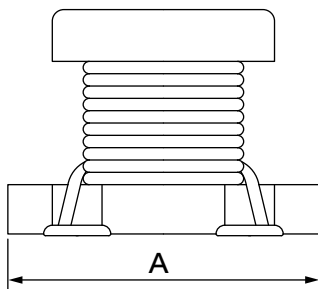
PRODUCT IDENTIFICATION

① ② ③ ④ ⑤

MSCH - 3225C - 100 J □ □

- ① Product Code
- ② Dimensions
- ③ Inductance Code
- ④ Tolerance Code
- ⑤ Pattern Code

PRODUCT SERIES



	A	B	C	D	E	F	G	H
2015C	2.0±0.3	1.5±0.2	1.7±0.3	1.6	0.8	0.9	0.6	1.8
3216C	3.2±0.3	1.6±0.2	1.8±0.3	1.0	1.2	1.5	1.0	2.6
3225C	3.2±0.3	2.5±0.2	2.0±0.3	1.0	1.2	1.5	1.0	2.8
4532C	4.5±0.3	3.2±0.2	2.6±0.3	1.5	1.5	2.0	1.2	3.5
5750C	5.7±0.3	5.0±0.3	4.7±0.3	1.85	2.0	2.0	2.0	5.0

Dimension in mm

■ PRODUCT SPECIFICATIONS

Part No.	Inductance (μ H)	Test Frequency	DC Resistance (Ω)Max.				Self Resonant Freq. (MHz)Min.			Permissible DC Current (mA)Max.			
			2015C	3216C	3225C	4532C	3216C	3225C	4532C	2015C	3216C	3225C	4532C
R12	0.12	1MHz		0.112			250				970		
R22	0.22			0.140			250				850		
R47	0.47			0.210			180				700		
1R0	1.0		0.26	0.364	0.078	0.08	100	96	100	650	510	800	1080
1R5	1.5		0.35			0.09			85	600			1000
2R2	2.2		0.52	0.533	0.1261	0.11	50	64	60	500	430	600	900
3R3	3.3		0.65		0.16	0.13		54	47	480		500	800
4R7	4.7		0.78	0.845	0.195	0.15	31	43	35	300	340	450	750
5R6	5.6		0.84							280			
6R8	6.8		1.30		0.32	0.2		35	30	250		350	720
8R6	8.6		1.52							230			
100	10		1.62	1.69	0.39	0.24	20	26	23	200	230	300	650
150	15		2.01		0.60	0.32		22	20	150		270	570
220	22		3.77	3.90	0.923	0.6	14	19	15	100	160	250	420
330	33				1.20	1.0		17	12			220	310
470	47			10.40	1.69	1.1	10	15	10		100	170	280
680	68				3.20	1.7		11	8.4			140	220
101	100			15.60	4.55	2.2	7	10	6.8		80	100	190
151	150					3.5			5.5				130
221	220				12	4.0		6.8	4.5			70	110
331	330			14	6.8		5.6	3.6			60	100	
391	390			23			5.0				60		
471	470			26	8.5		5.0	3.0			60	90	
561	560	1KHz			30	14		5.0	2.0			60	75

■ PRODUCT SPECIFICATIONS

Part No.	Inductance (μ H)	Test Frequency	DC Resistance (Ω)Max.	Self Resonant Freq. (MHz)Min.	Permissible DC Current (A)Max.
			5750C	5750C	5750C
R12	0.12	1MHz	0.0098	450	6.0
R27	0.27		0.0140	300	5.3
R47	0.47		0.0182	200	4.8
1R0	1.0		0.0266	150	4.0
1R5	1.5		0.0308	110	3.7
2R2	2.2		0.0406	80	3.2
3R3	3.3		0.0504	40	2.9
4R7	4.7		0.0574	30	2.7
6R8	6.8		0.1036	25	2.0
100	10		0.1302	20	1.7
150	15		0.210	17	1.4
220	22		0.266	15	1.2
330	33		0.448	12	0.9
470	47		0.560	10	0.8
680	68		0.938	7.6	0.64
101	100	100KHz	1.204	6.5	0.56
151	150		2.660	5.0	0.42
221	220		3.360	4.0	0.32
331	330		6.160	3.1	0.27
471	470		7.560	2.4	0.24
681	680	11.340	1.9	0.19	
102	1000	100KHz	14.420	1.7	0.15
222	2200		30.100	1.2	0.10
472	4700		61.040	0.8	0.07
103	10000		140.000	0.5	0.05

■ TOLERANCE OF INDUCTANCE

Tolerance	MSCH-2015C	MSCH-3216C	MSCH-3225C	MSCH-4532C	MSCH-5750C
10% (K)	10 ~ 22 μ H	100 μ H	10 ~ 560 μ H	10 ~ 560 μ H	100 ~ 1000 μ H
15% (L)					
20% (M)	1.0 ~ 8.6 μ H	1.0 ~ 47 μ H	1.0 ~ 6.8 μ H	1.0 ~ 6.8 μ H	0.12 ~ 68 μ H
30% (N)		0.12 ~ 0.47 μ H			