

### FEATURES

- Available in magnetically shielded.
- Low DC resistance.
- Suitable for large currents.
- Ideal for a variety of DC °V DC converter inductor applications.
- Available on tape and reel for auto surface mounting.

### APPLICATIONS

- I Power supply for VTRs.
- OA equipment.
- LCD televisions.
- Notebook PCs.
- Portable communication equipment.
- DC/DC converters, etc.

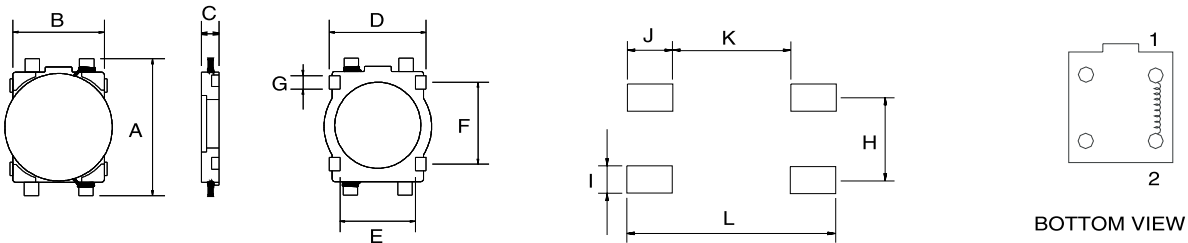
### PRODUCT IDENTIFICATION

1   
 2   
 3   
 4   
 5  
 MSCDO - 4D11 - 100 M □ □

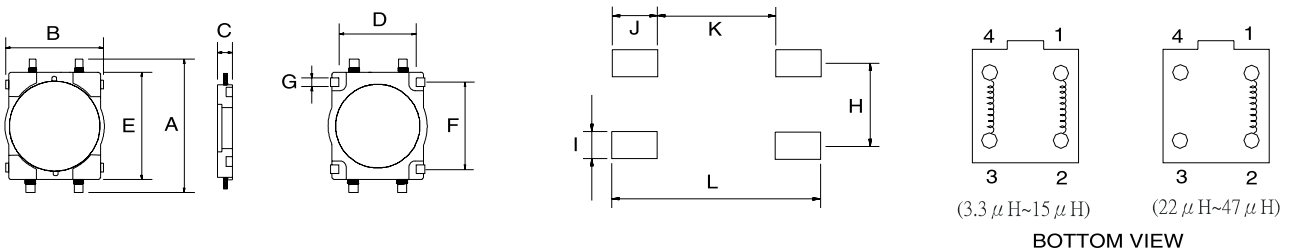
- ① Product Code
- ② Core Dimensions
- ③ Inductance Code
- ④ Tolerance Code
- ⑤ Pattern Code

### PRODUCT SERIES

#### MSCDO-4D11



#### MSCDO-5D11



Part No.	A	B	C	D	E	F	G
MSCDO-4D11	5.8 <sup>+0</sup>	4.4 <sup>+0</sup>	1.2 <sup>+0</sup>	3.7	2.9	3.2	0.5
MSCDO-5D11	7.4 <sup>+0</sup>	5.8 <sup>+0</sup>	1.2 <sup>+0</sup>	4.2	6.0	4.5	0.6

Part No.	H	I	J	K	L
MSCDO-4D11	3.2	0.8	1.4	2.5	5.3
MSCDO-5D11	3.4	1.1	1.4	3.6	6.4

Notes: Dimension in mm

**■ PRODUCT SPECIFICATIONS**

Part No.	Inductance ( $\mu$ H)	DC Resistance( $\Omega$ )Max.		Permissible DC Current(A)Max.	
		4D11	5D11	4D11	5D11
2R2	2.2	0.116		0.95	
3R3	3.3	0.174	0.109	0.77	0.94
4R7	4.7	0.216	0.156	0.75	0.80
6R8	6.8	0.296	0.216	0.62	0.65
100	10	0.457	0.575	0.50	0.53
150	15	0.676	0.438	0.40	0.40
220	22	1.066	0.663	0.30	0.36
330	33	1.647	0.975	0.24	0.32
470	47	2.843	1.38	0.18	0.23
680	68		1.70		0.20
101	100		2.80		

1. TEST FREQ. (L): @ 100KHz/250mV

2. TOLERANCE OF INDUCTANCE: 2.2~100  $\mu$  H  $\pm$  20%(M)

3. The max. permissible DC current is the DC current applied which causes 10% reduction of its initial inductance value, or the coil temperature to rise by 40°C, whichever is lower.