

■ FEATURES

- Excellent property with high saturation for surface mounting
- Magnetically shielded & low radiation
- Large rated current 3.0A Exceed.
- Low profile less than 1.5mm

■ APPLICATIONS

- DC-DC converter
- LCD monitor
- Digital video and still cameras
- Hard disk drivers and others

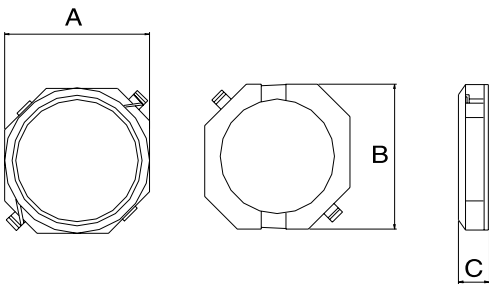
■ PRODUCT IDENTIFICATION

①
②
③④
⑤

 MSCDRI - 0715A - 100M □ □

- ① Product Code
- ② Dimensions
- ③ Inductance Code
- ④ Tolerance Code
- ⑤ Pattern Code

■ PRODUCT SERIES



TYPE	DIMENSIONS in m/m		
	A	B	C
MSCDRI-0715A	7.3 ⁺⁰	7.3 ⁺⁰	1.5 ⁺⁰

