

■ **FEATURES**

These power inductors have low DC resistance and large permissible DC current with high reliability.

These power inductors can be directly mounted with special treated electrodes.

Tape and reel packages are available for auto mounting machine.

Magnetic shielded products are available for each series for the consideration of against radiation.

■ **APPLICATIONS**

For the smoothing circuit of DC-DC converter, as a choke coil or chopper coil.

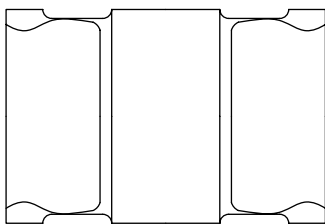
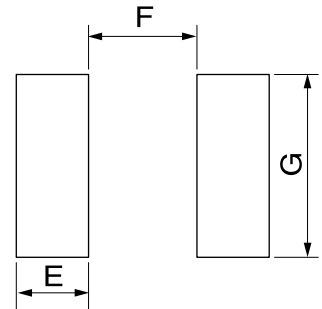
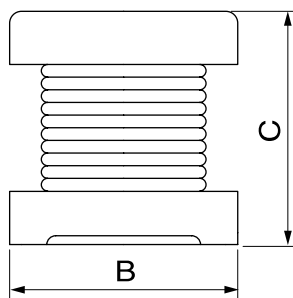
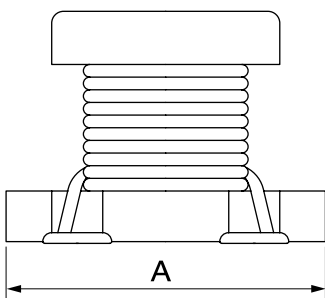
Suitable for use in power lines of camcorder, LCD set, OA equipment, notebook computer, PDA, and small size communication equipment.

■ **PRODUCT IDENTIFICATION**

① ② ③ ④ ⑤
 MSCH 3225C 100 J □ □

- ① Product Code
- ② Dimensions
- ③ Inductance Code
- ④ Tolerance Code
- ⑤ Pattern Code

■ **PRODUCT SERIES**



	A	B	C	E	F	G
2015C	2.0±0.2	1.5±0.2	1.7±0.2	0.9	0.6	1.6
3216C	3.2±0.3	1.6±0.2	1.8±0.2	1.5	1.0	1.5
3225C	3.2±0.3	2.5±0.2	2.0±0.2	1.5	1.0	2.0
4532C	4.5±0.3	3.2±0.2	2.6±0.2	2.0	1.2	3.0
5750C	5.7±0.3	5.0±0.03	4.7±0.3	2.0	2.0	5.0

Dimension in m/m

WIREF WOUND TYPE

■ PRODUCT SPECIFICATIONS

Part No.	Inductance (μ H)	Test Frequency	DC Resistance (Ω)Max.				Self Resonant Freq. (MHz)Min.		
			2015C	3216C	3225C	4532C	3216C	3225C	4532C
R12	0.12	1MHz		0.112			250		
R22	0.22			0.140			250		
R47	0.47			0.210			180		
1R0	1.0		0.26	0.364	0.078	0.08	100	96	100
1R5	1.5					0.09			85
2R2	2.2		0.52	0.333	0.1261	0.11	50	64	60
3R3	3.3		0.65			0.13			47
4R7	4.7		0.78	0.845	0.195	0.15	31	43	35
5R6	5.6		0.84						
6R8	6.8		1.30			0.2			30
8R6	8.6		1.52						
100	10		1.62	1.69	0.39	0.24	20	26	23
150	15		2.01			0.32			20
220	22		3.77	3.90	0.923	0.6	14	19	15
330	33					1.0			12
470	47			10.40	1.69	1.1	10	15	10
680	68					1.7			8.4
101	100			15.60	4.55	2.2	7	10	6.8
151	150					3.5			5.5
221	220					4.0		6.8	4.5
331	330				6.8		5.6	3.6	
391	390						5.0		
471	470				8.5		5.0	3.0	
561	560	1KHz					5.0		

■ PRODUCT SPECIFICATIONS

Part No.	Inductance (μ H)	Test Frequency	Permissible DC Current (mA)Max.			
			2015C	3216C	3225C	4532C
R12	0.12	1MHz		970		
R22	0.22			850		
R47	0.47			700		
1R0	1.0		0.65	510	800	1080
1R5	1.5					1000
2R2	2.2		0.50	430	600	900
3R3	3.3		0.48			800
4R7	4.7		0.30	340	450	750
5R6	5.6		0.28			
6R8	6.8		0.25			720
8R6	8.6		0.23			
100	10		0.20	230	300	650
150	15		0.15			570
220	22		0.10	160	250	420
330	33					310
470	47			100	170	280
680	68					220
101	100			80	100	190
151	150					130
221	220				70	110
331	330			60	100	
391	390			60		
471	470			60	90	
561	560	1KHz			60	

■ PRODUCT SPECIFICATIONS

Part No.	Inductance (μ H)	Test Frequency	DC Resistance (Ω)Max.	Self Resonant Freq. (MHz)Min.	Permissible DC Current (A)Max.
			5750C	5750C	5750C
R12	0.12	1MHz	0.0098	450	6.0
R22	0.22		0.0112	300	5.3
R47	0.47		0.0182	200	4.8
1R0	1.0		0.027	150	4.0
1R5	1.5		0.031	110	3.7
2R2	2.2		0.041	80	3.2
3R3	3.3		0.050	40	2.9
4R7	4.7		0.057	30	2.7
6R8	6.8		0.104	25	2.0
100	10		0.130	20	1.7
150	15		0.210	17	1.4
220	22		0.266	15	1.2
330	33		0.448	12	0.9
470	47		0.560	10	0.8
680	68		0.938	7.6	0.64
101	100		100KHz	1.204	6.5
151	150	2.660		5.0	0.42
221	220	3.360		4.0	0.32
331	330	6.160		3.1	0.27
471	470	7.560		2.4	0.24
681	680	11.340	1.9	0.19	
102	1000	10KHz	14.420	1.7	0.15
222	2200		30.100	1.2	0.10
472	4700		61.040	0.8	0.07
103	10000		140.000	0.5	0.05

■ TOLERANCE OF INDUCTANCE

Tolerance	MSCH2015C	MSCH3216C	MSCH3225C	MSCH4532C	MSCH5750C
10% (K)	10 ~ 22 μ H	10 ~ 100 μ H	10 ~ 560 μ H	10 ~ 470 μ H	
15% (L)					
20% (M)	1.0 ~ 8.6 μ H	0.12 ~ 6.8 μ H	1.0 ~ 6.8 μ H	1.0 ~ 6.8 μ H	0.12 ~ 10000 μ H
+40%, -20% (N)					

WIPE WOUND TYPE