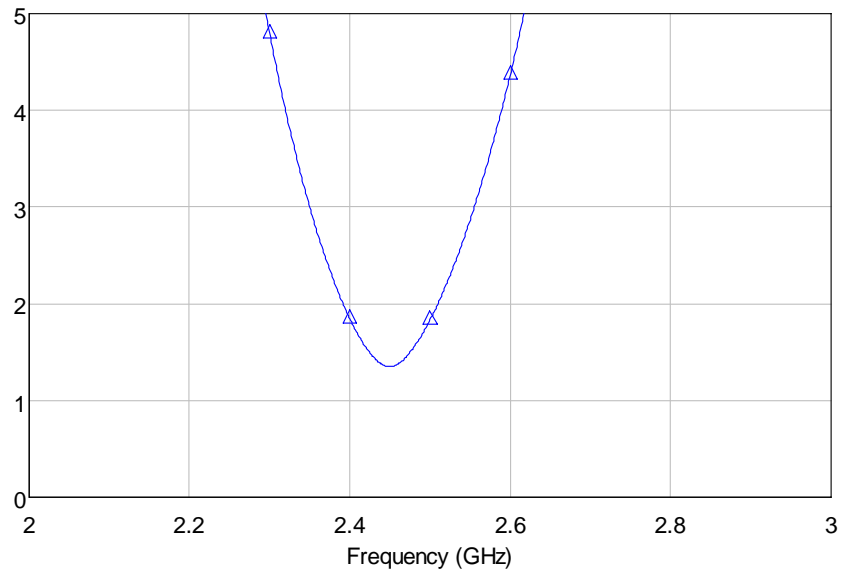
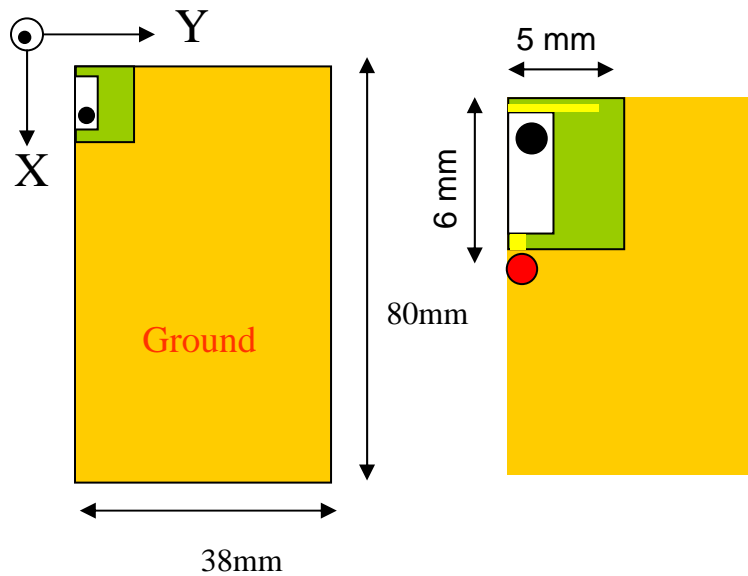


# ANTENNA INSTALLATION GUIDE FOR LTA-3216-2G4S1-A1

# TYPE A :

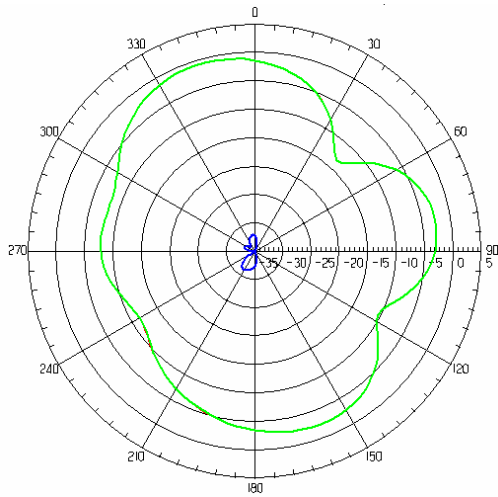


● Feeding point

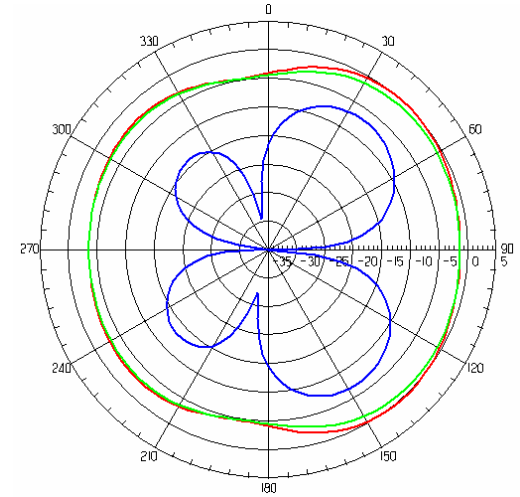
Peak Gain    -0.13 dB  
 Efficiency    42.5%

VSWR \ Bandwidth (MHz)	Bandwidth (MHz)
2	120
2.5	165
3	205

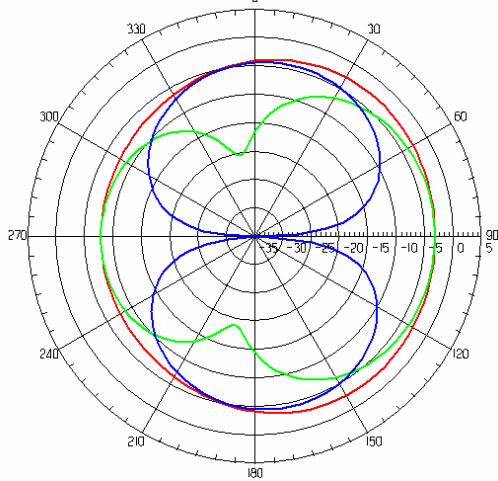
# XY CUT






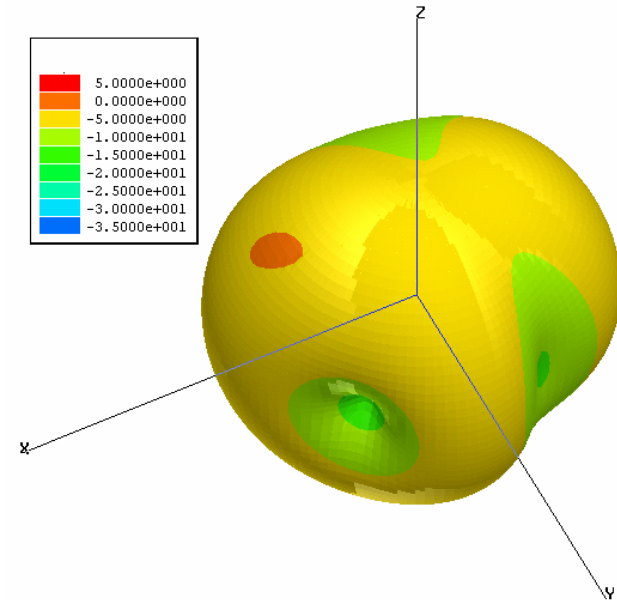
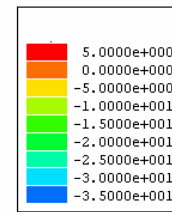
# XZ CUT



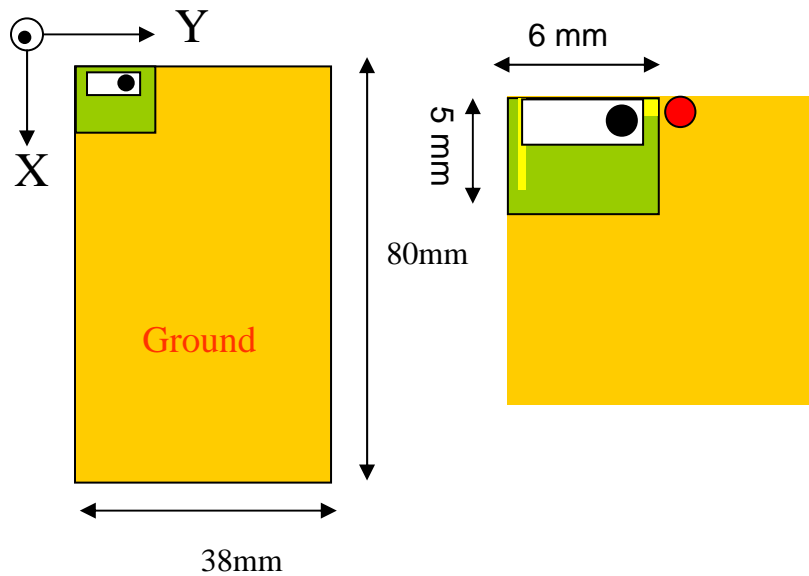
# YZ CUT



-  Total
-  Horizontal
-  Vertical



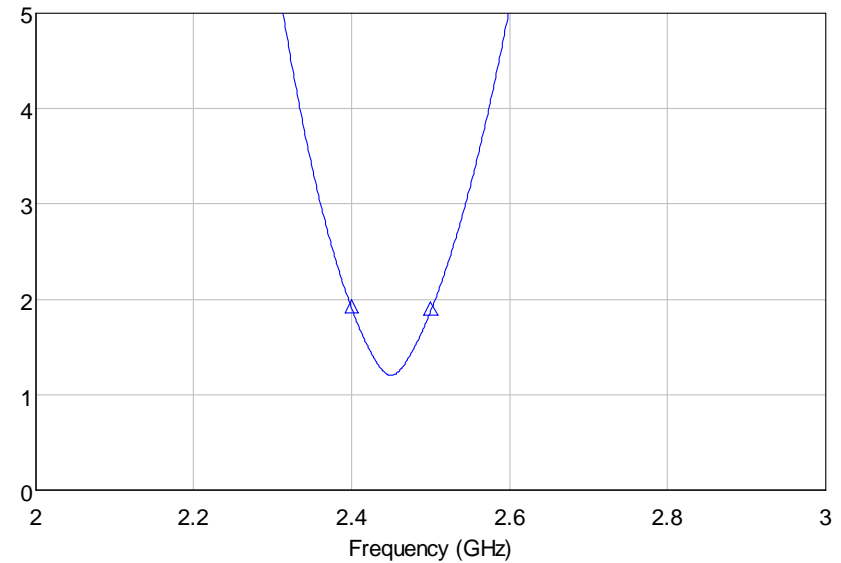
# TYPE B :



● Feeding point

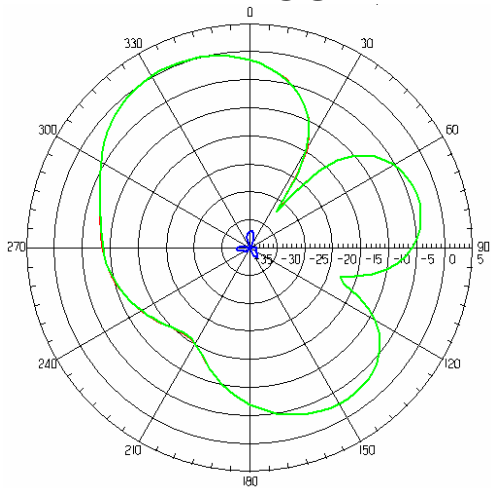
Peak Gain 0.67 dB

Efficiency 40.3 %

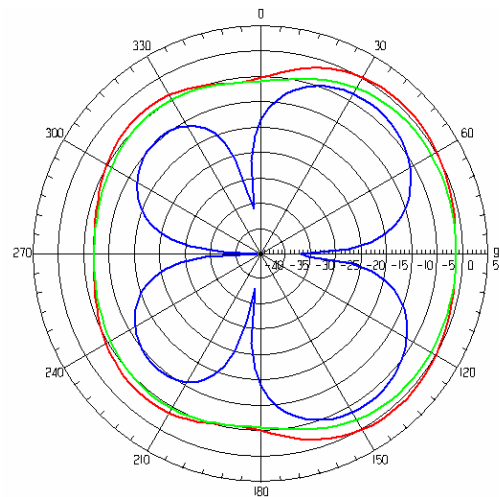


VSWR \ Bandwidth (MHz)	Bandwidth (MHz)
2	110
2.5	150
3	180

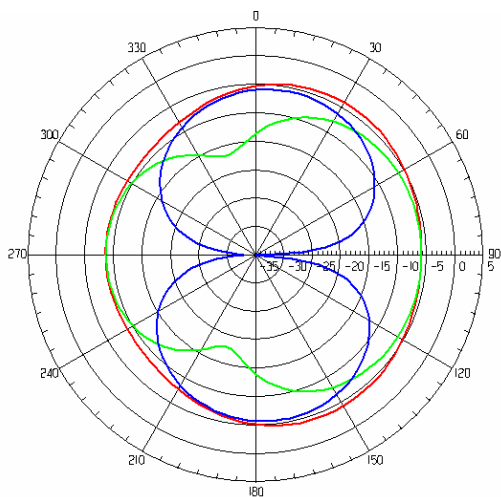
# XY CUT






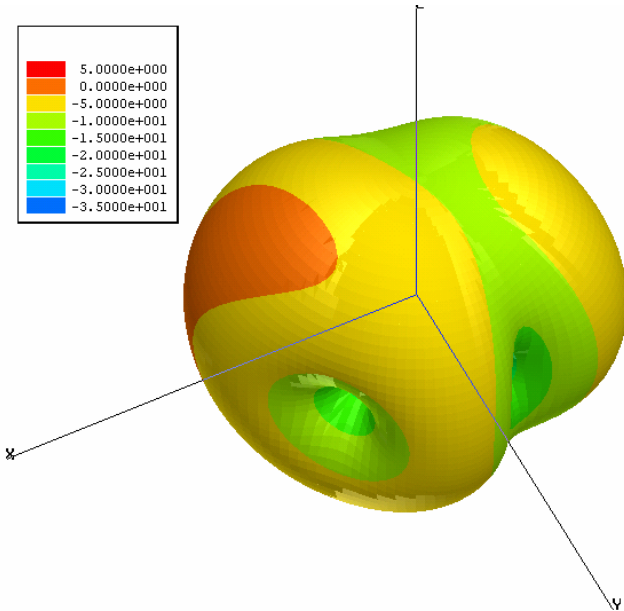
# XZ CUT



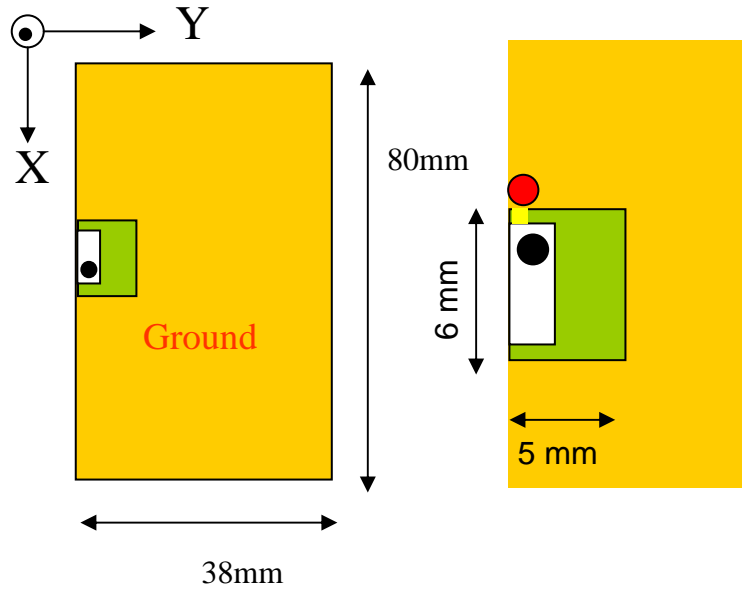
# YZ CUT



-  Total
-  Horizontal
-  Vertical



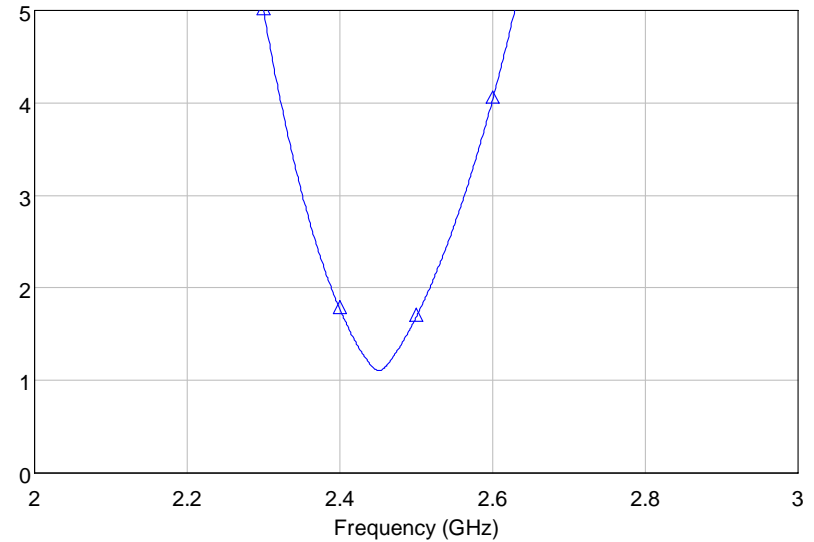
# TYPE C :



● Feeding point

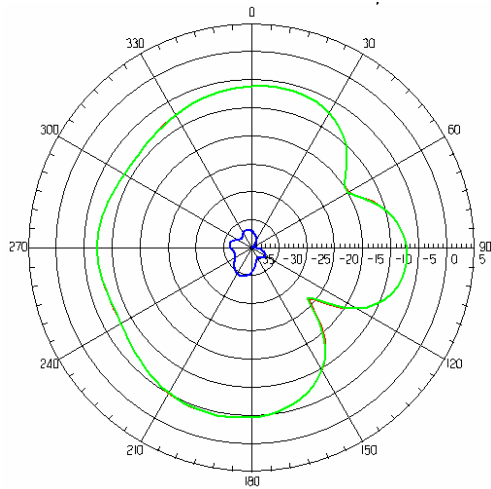
Peak Gain -4.5 dB

Efficiency 20.0 %

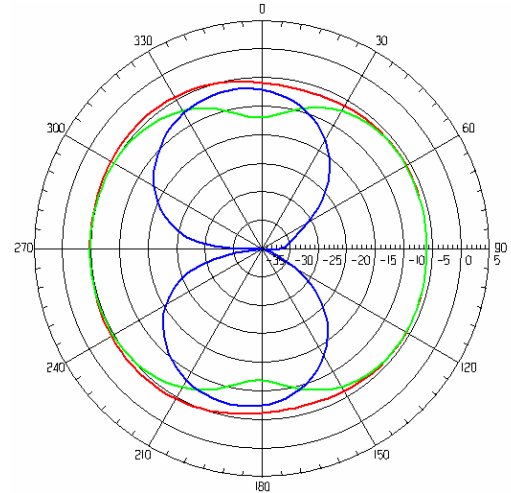


VSWR	Bandwidth (MHz)
2	85
2.5	115
3	140

# XY CUT



# XZ CUT

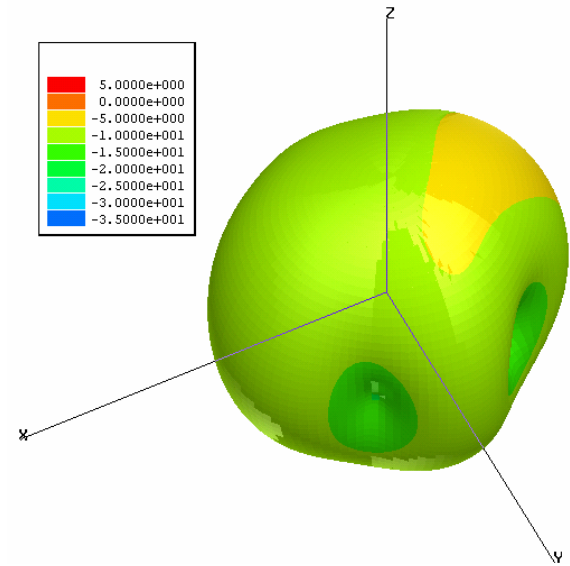
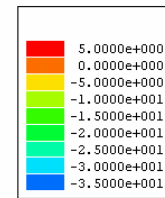
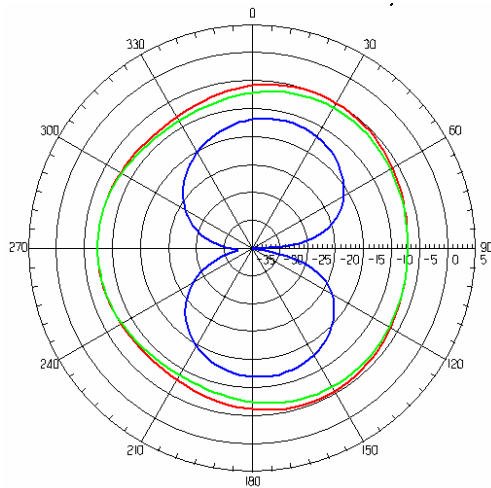


— Total

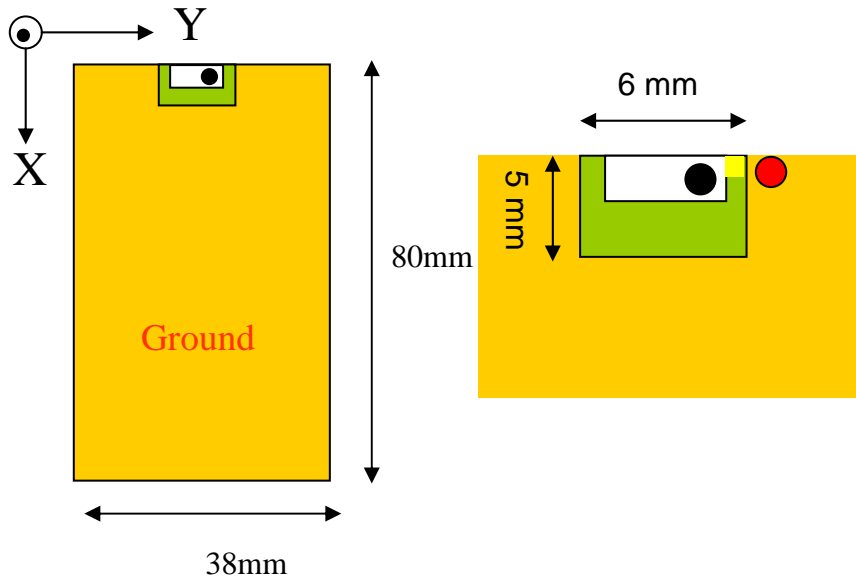
— Horizontal

— Vertical

# YZ CUT



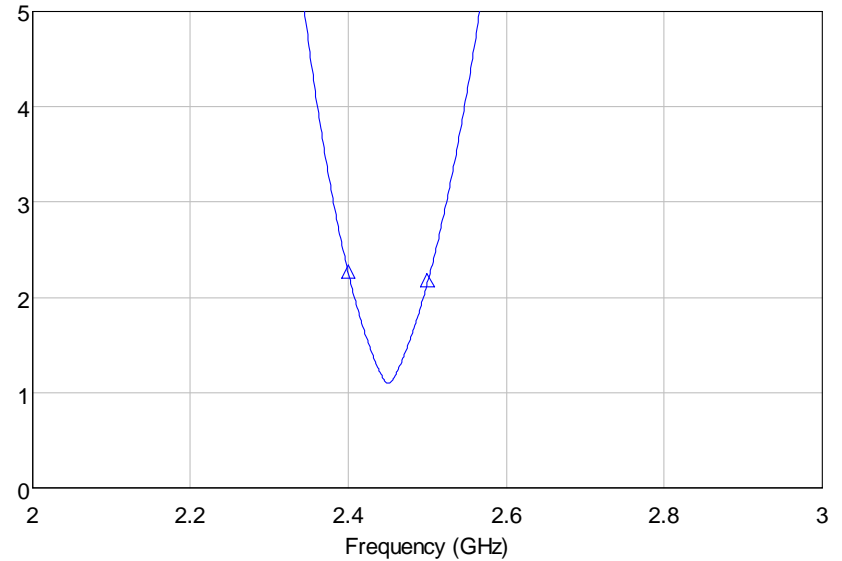
# TYPE D :



● Feeding point

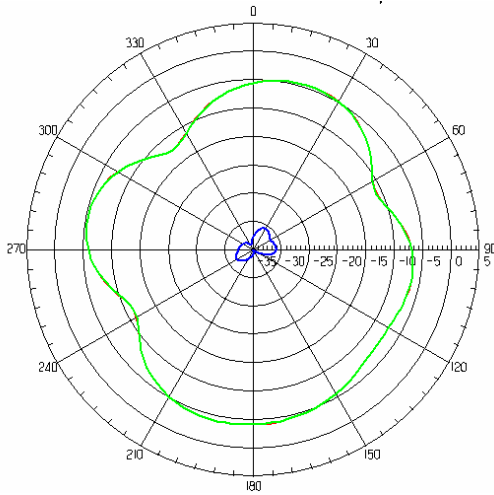
Peak Gain    -3.7 dB

Efficiency    22.6 %

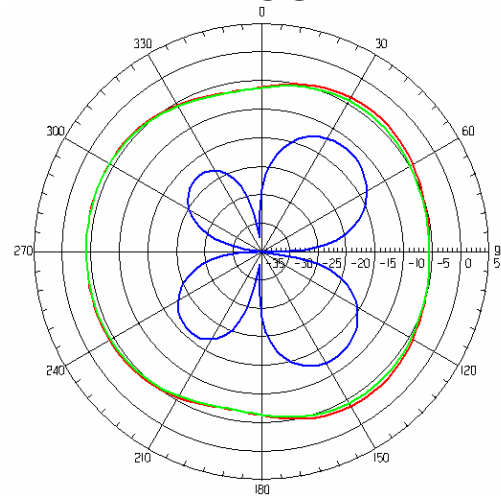


VSWR \ Bandwidth (MHz)	Bandwidth (MHz)
2	85
2.5	115
3	140

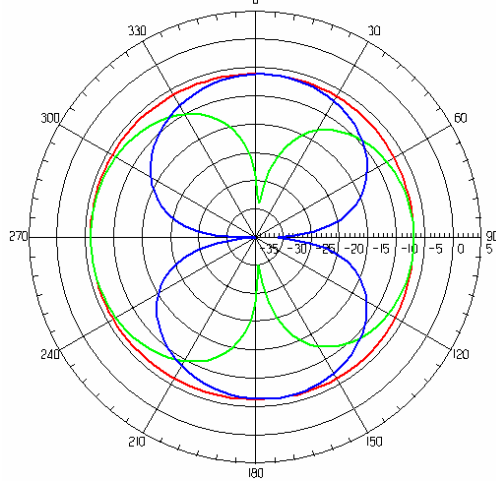
# XY CUT






# XZ CUT



# YZ CUT



-  Total
-  Horizontal
-  Vertical

