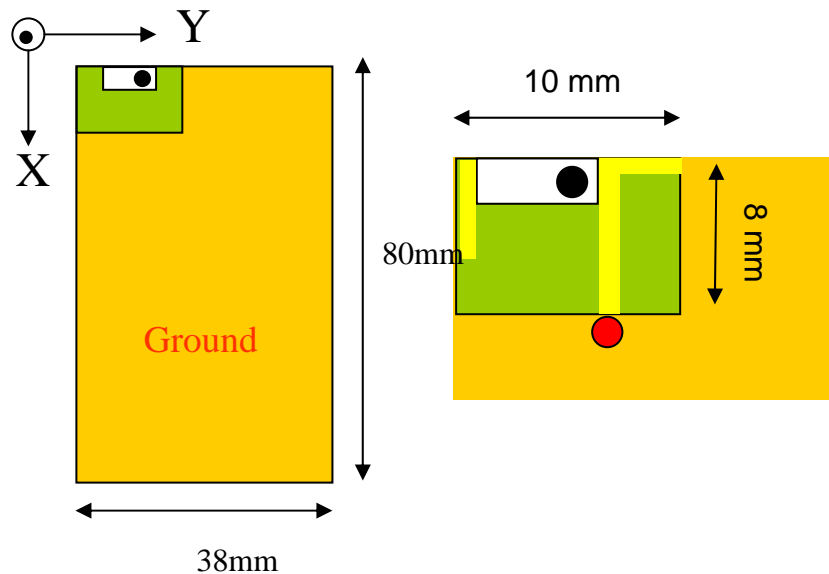


ANTENNA INSTALLATION GUIDE FOR LTA-5724-1G5S1-A1

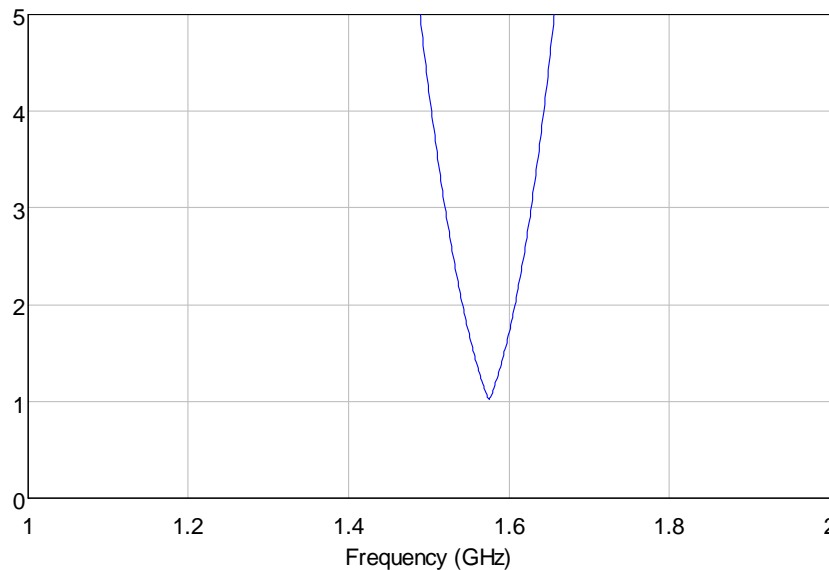
TYPE A :



● Feeding point

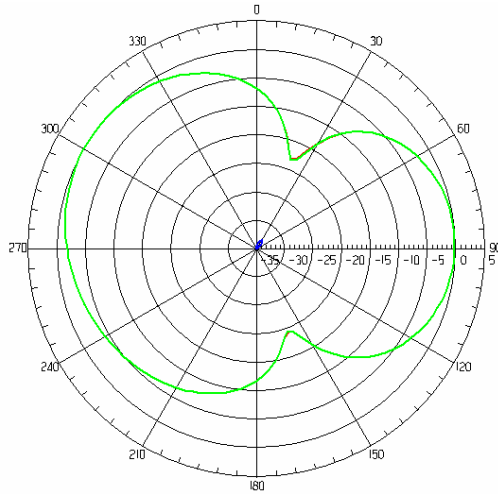
Peak Gain 0.75 dB

Efficiency 62.9 %

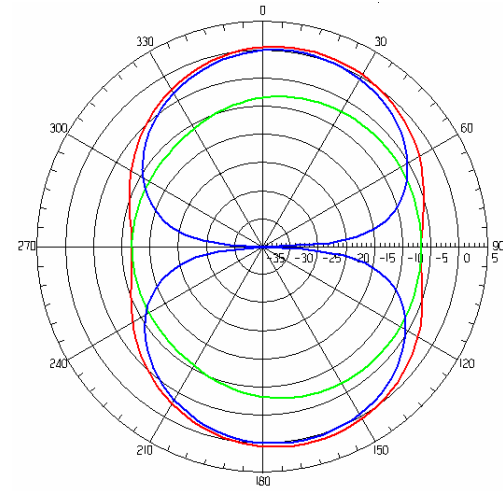


VSWR \ Bandwidth (MHz)	Bandwidth (MHz)
2	65
2.5	85
3	105

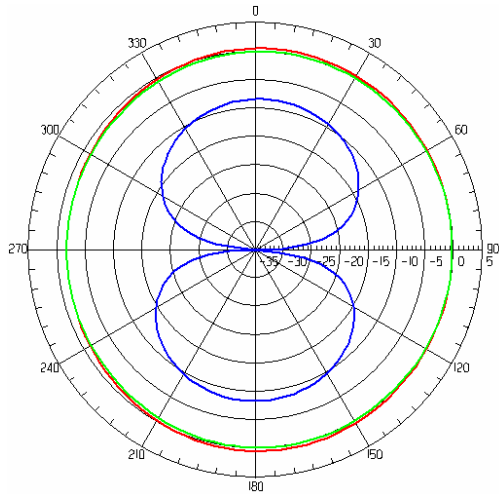
XY CUT



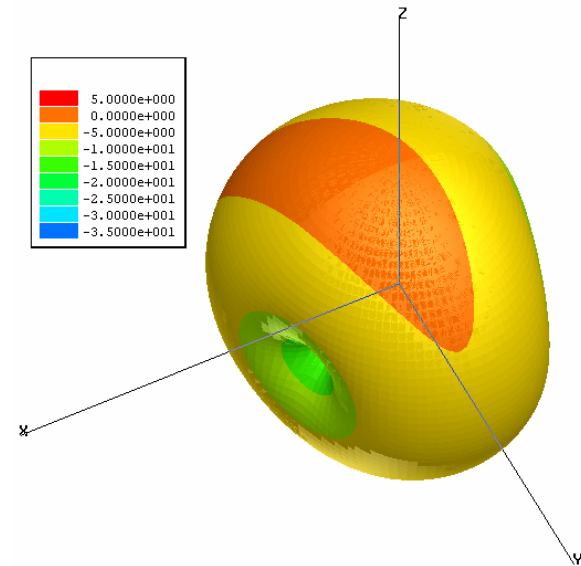
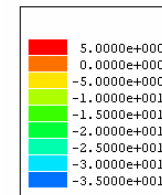
XZ CUT



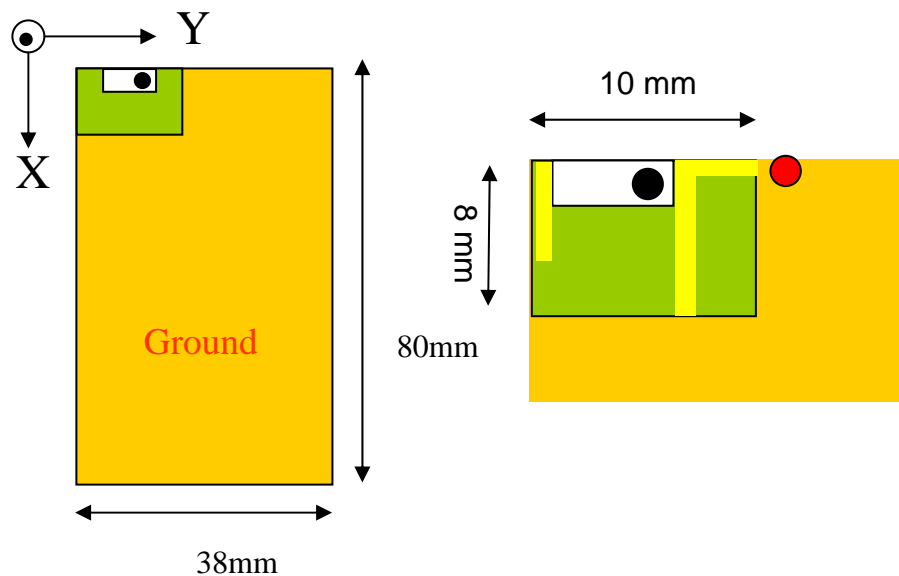
YZ CUT



- Total
- Horizontal
- Vertical



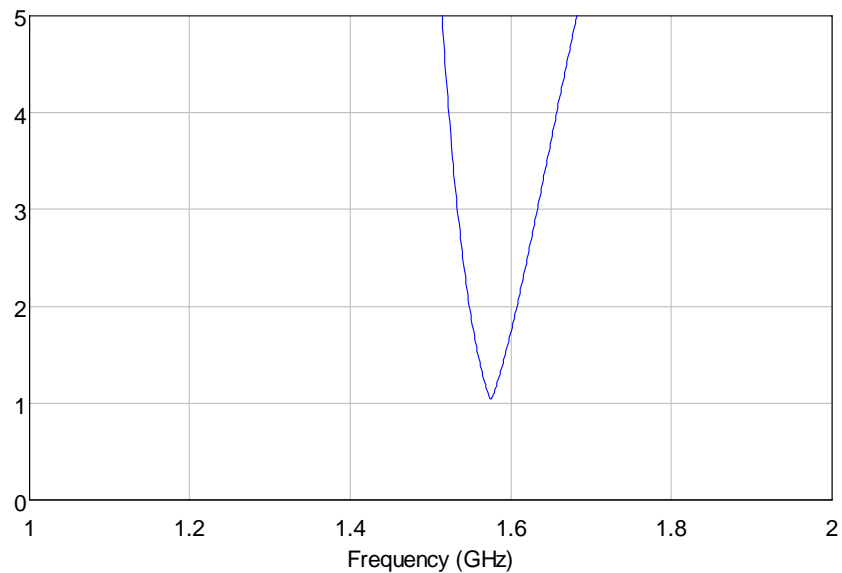
TYPE B :



● Feeding point

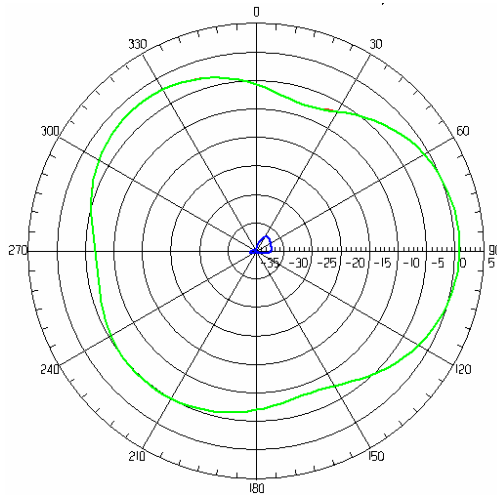
Peak Gain 0.79 dB

Efficiency 60.0 %

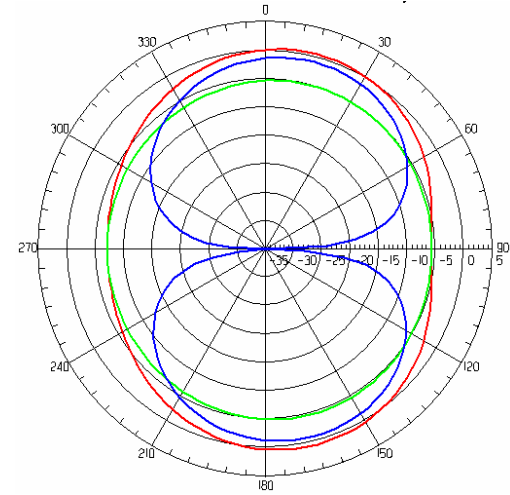


VSWR \ Bandwidth (MHz)	Bandwidth (MHz)
2	60
2.5	80
3	100

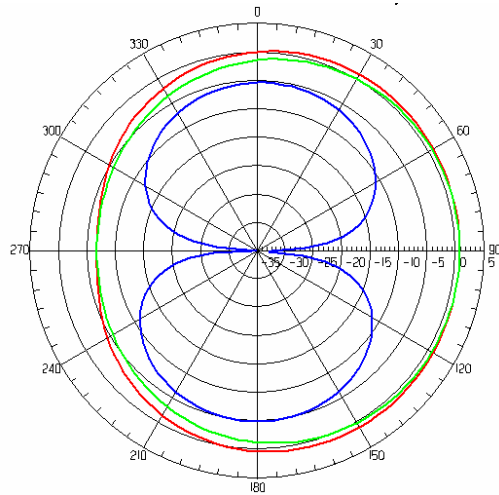
XY CUT



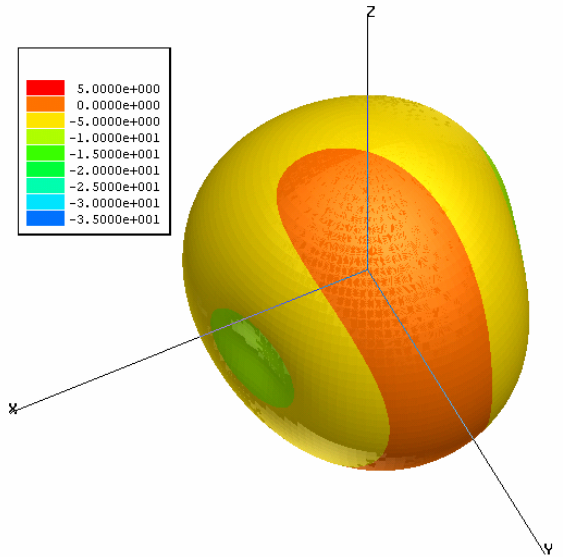
XZ CUT



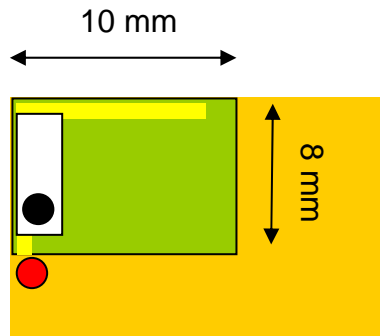
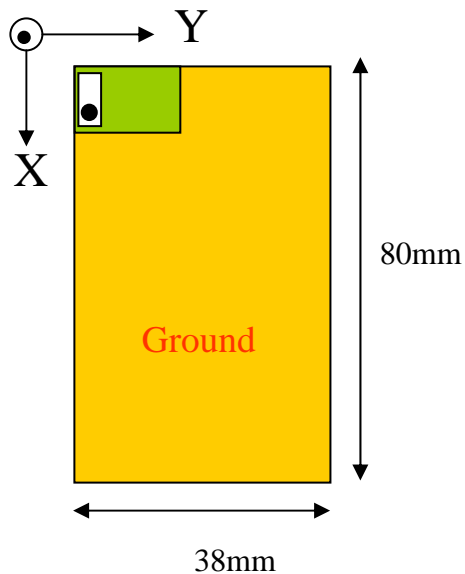
YZ CUT



- Total
- Horizontal
- Vertical



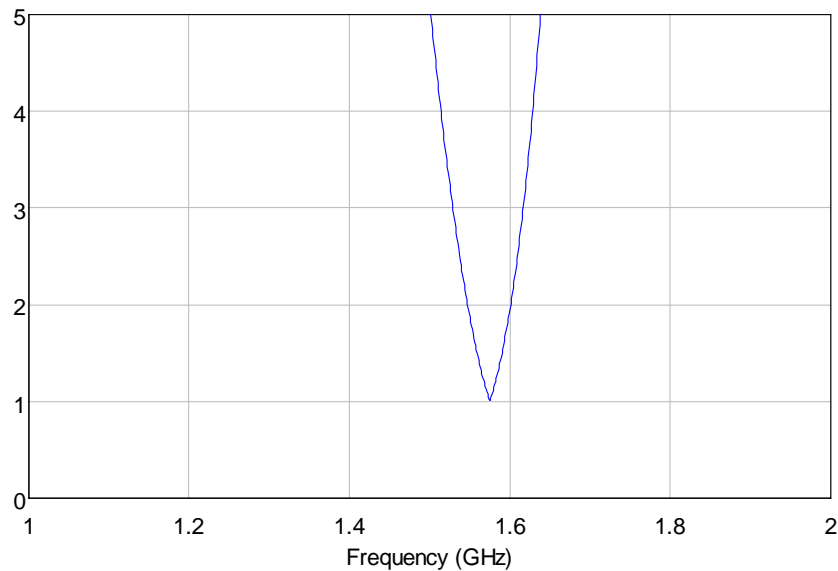
TYPE C :



● Feeding point

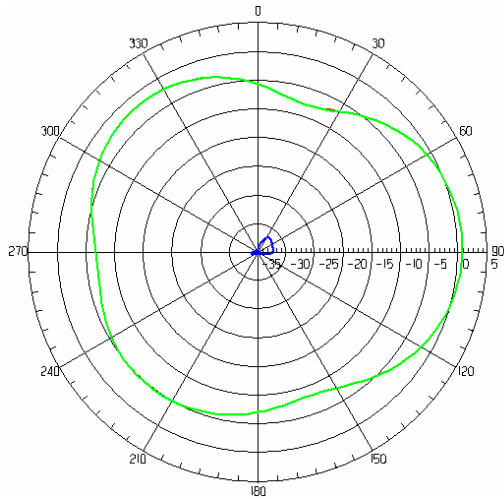
Peak Gain 0.75 dB

Efficiency 60.1%

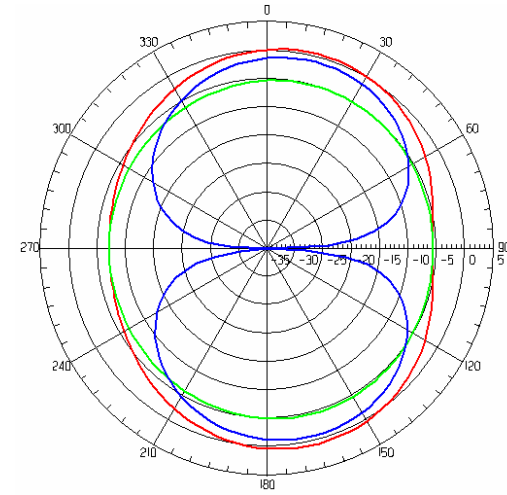


VSWR \ Bandwidth (MHz)	Bandwidth (MHz)
2	55
2.5	70
3	90

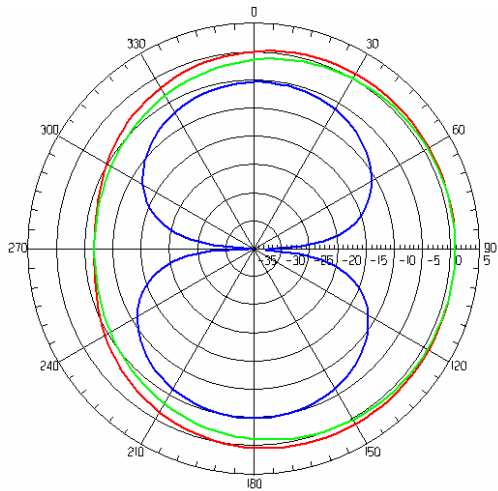
XY CUT



XZ CUT



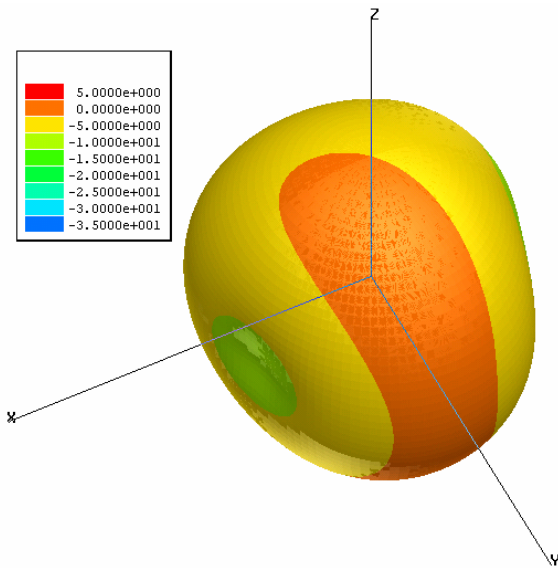
YZ CUT



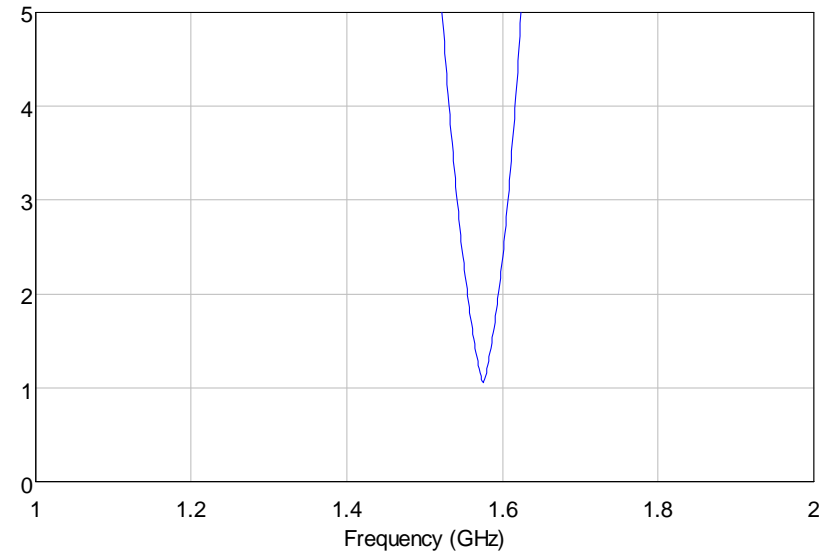
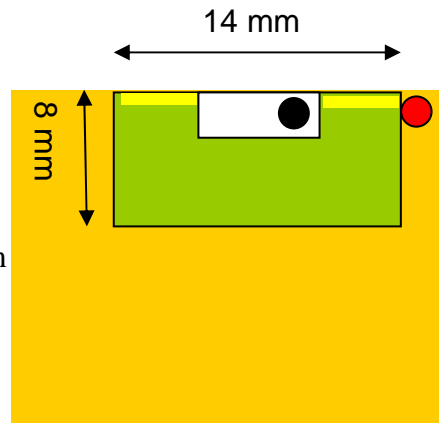
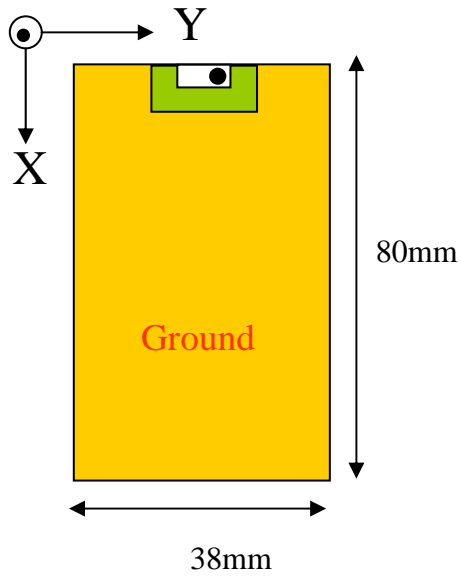
— Total

— Horizontal

— Vertical



TYPE D :



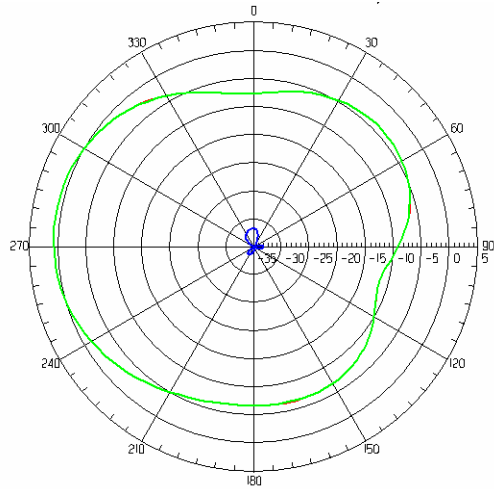
● Feeding point

Peak Gain 0.76 dB

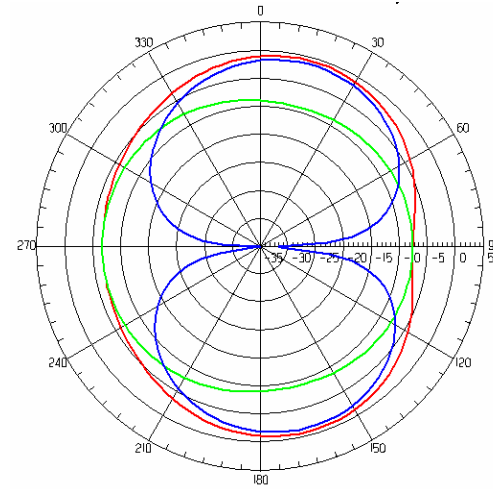
Efficiency 51.4 %

VSWR \ Bandwidth (MHz)	Bandwidth (MHz)
2	40
2.5	50
3	65

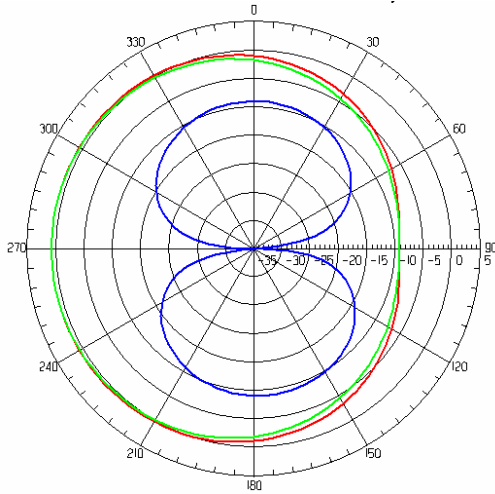
XY CUT






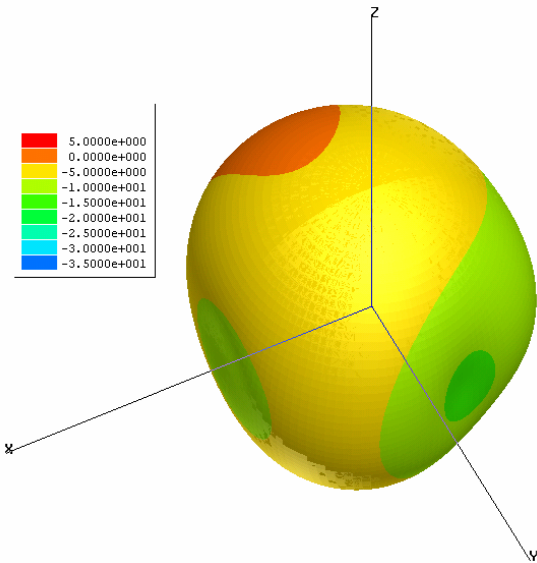
XZ CUT



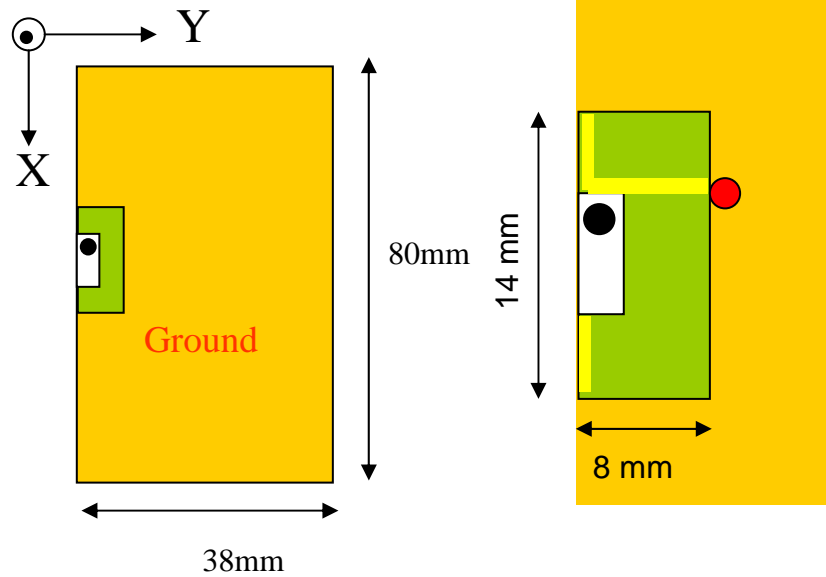
YZ CUT



-  Total
-  Horizontal
-  Vertical



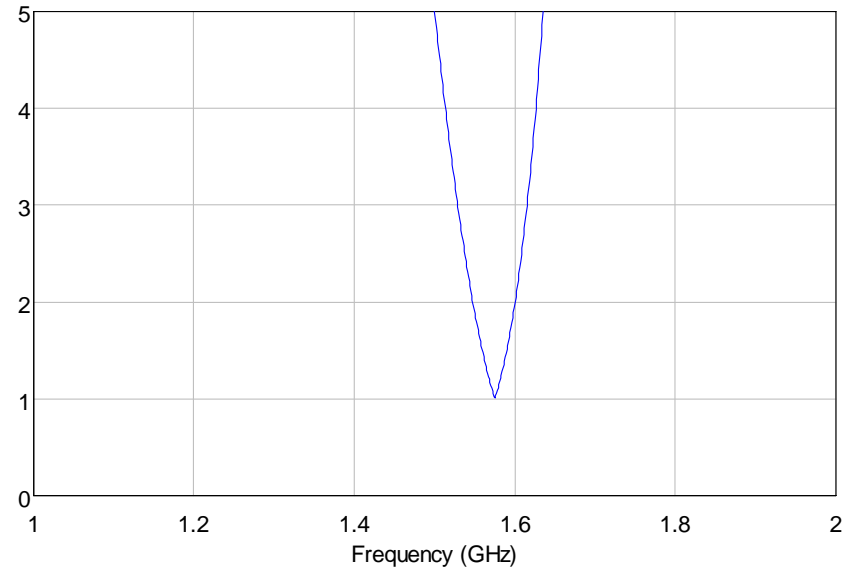
TYPE E :



● Feeding point

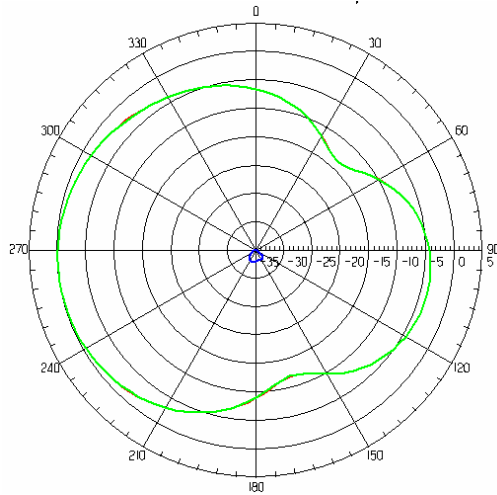
Peak Gain -0.03 dB

Efficiency 54.1 %

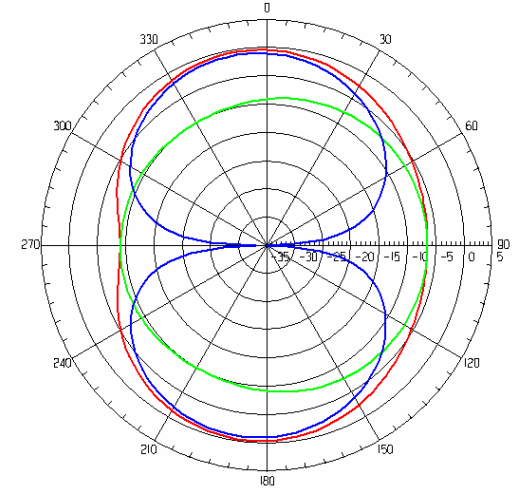


VSWR \ Bandwidth (MHz)	Bandwidth (MHz)
2	50
2.5	70
3	85

XY CUT



XZ CUT



Total

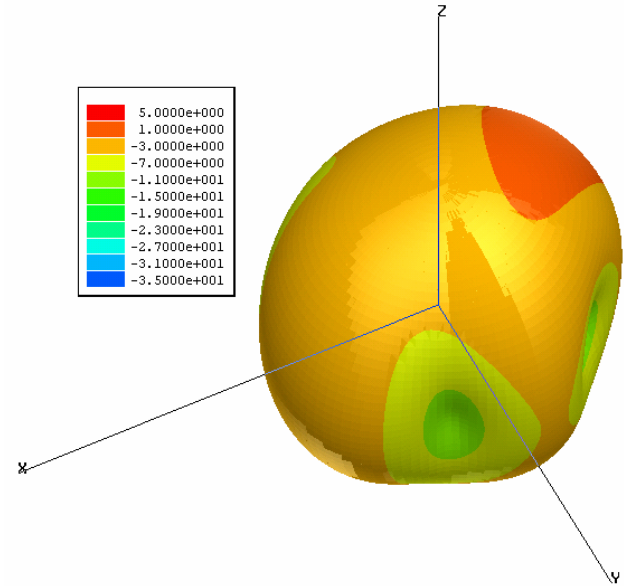
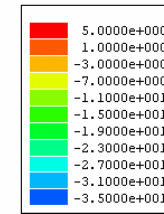
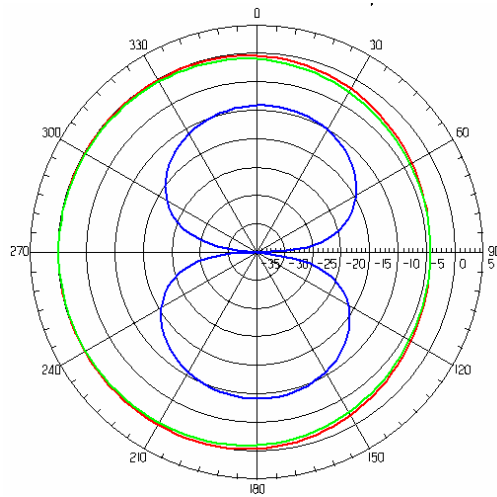


Horizontal

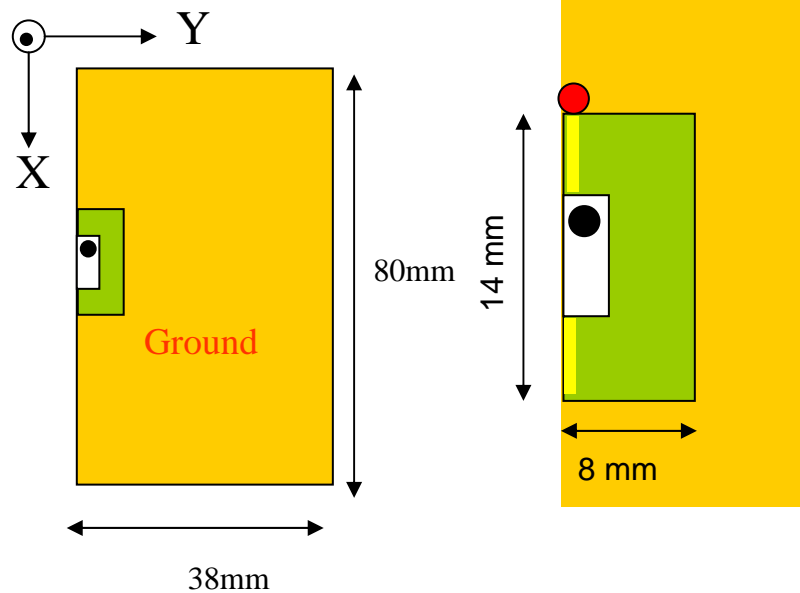


Vertical

YZ CUT



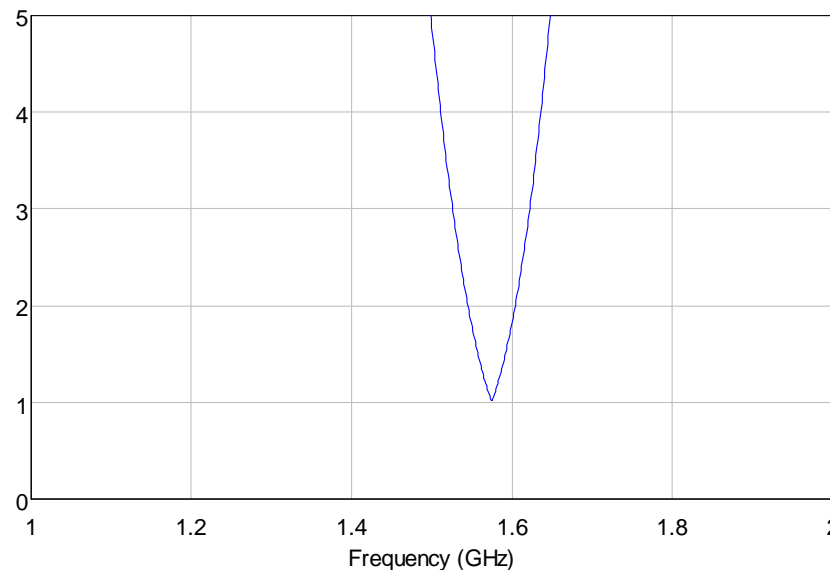
TYPE F :



● Feeding point

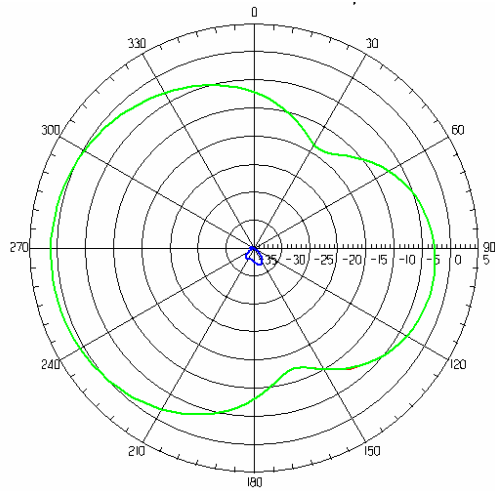
Peak Gain 1.2 dB

Efficiency 68.7 %

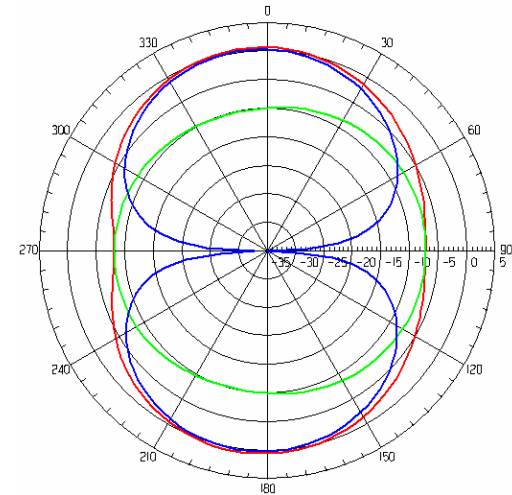


VSWR	Bandwidth (MHz)
2	60
2.5	80
3	95

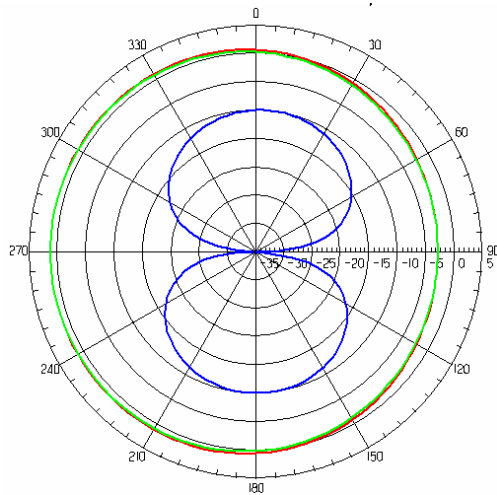
XY CUT






XZ CUT



YZ CUT



-  Total
-  Horizontal
-  Vertical

