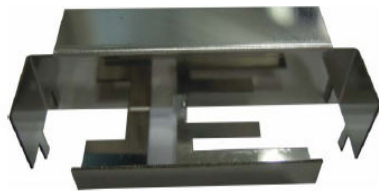
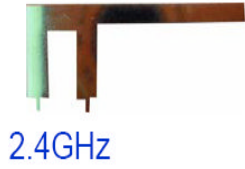


Metal Stamping Antenna (MSA Series) 金属冲压天线

■ We provide customized design for various applications



Specification

■ Impedance: 50ohm

Options

- SIZE
- Connector: IPEX/Cable/Core/DIP
- Band
- Fixed

We can support any bands and mini sizes.

Connector: IPEX/Cable/Core/DIP

©Please contact us for detail information.