



# Networking Communication Components

## RT Series

### **LAN Transformer**

Part number: RT21H01

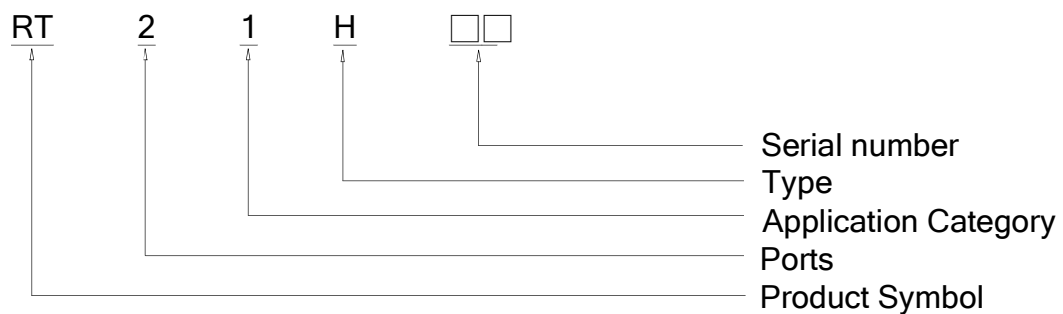
Part name : 10 / 100 Transformer Two Port



### **Feature**

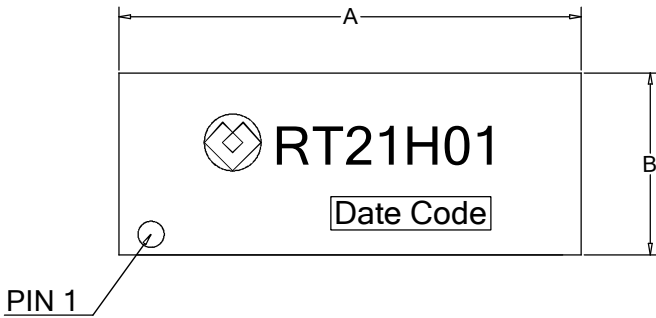
- Compliant and peak reflow temperature rating 245°C .
- Packaging specification is tube.  
(RT21H□□: Tube)

### **Part number code**

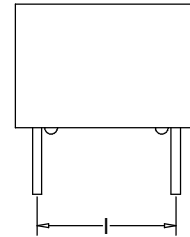
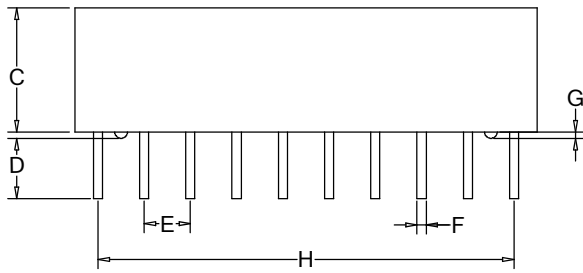
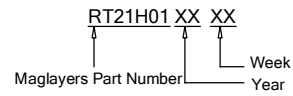


REV.	Description	Date	Drawn	Designed	Approved
A	Specification issued	02.06.2012	Allen.Yu	Allen.Yu	James.Cheng
B	Page 4 : Schematics	08.08.2013	Jamie.Chuang	Jamie.Chuang	James.Cheng

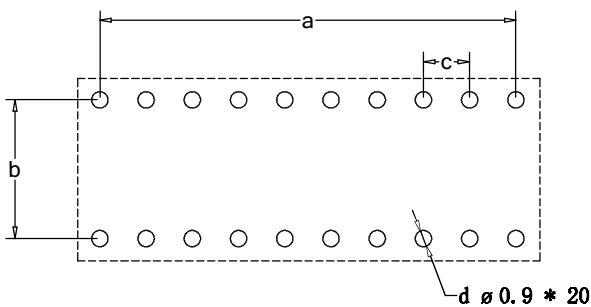
## Mechanical Dimension and Marking



UNIT	mm	inch
A	25.70 +0.254/-0.254	1.012 +0.010/-0.010
B	10.10 +0.254/-0.254	0.398 +0.010/-0.010
C	6.40 +0.254/-0.254	0.252 +0.010/-0.010
D	3.00 +0.254/-0.254	0.118 +0.010/-0.010
E	2.54 +0.254/-0.254	0.100 +0.010/-0.010
F	0.50 +0.127/-0.127	0.020 +0.005/-0.005
G	0.40 +0.127/-0.127	0.016 +0.005/-0.005
H	22.86 +0.254/-0.254	0.900 +0.010/-0.010
I	7.62 +0.254/-0.254	0.300 +0.010/-0.010



## Suggested Land Pattern

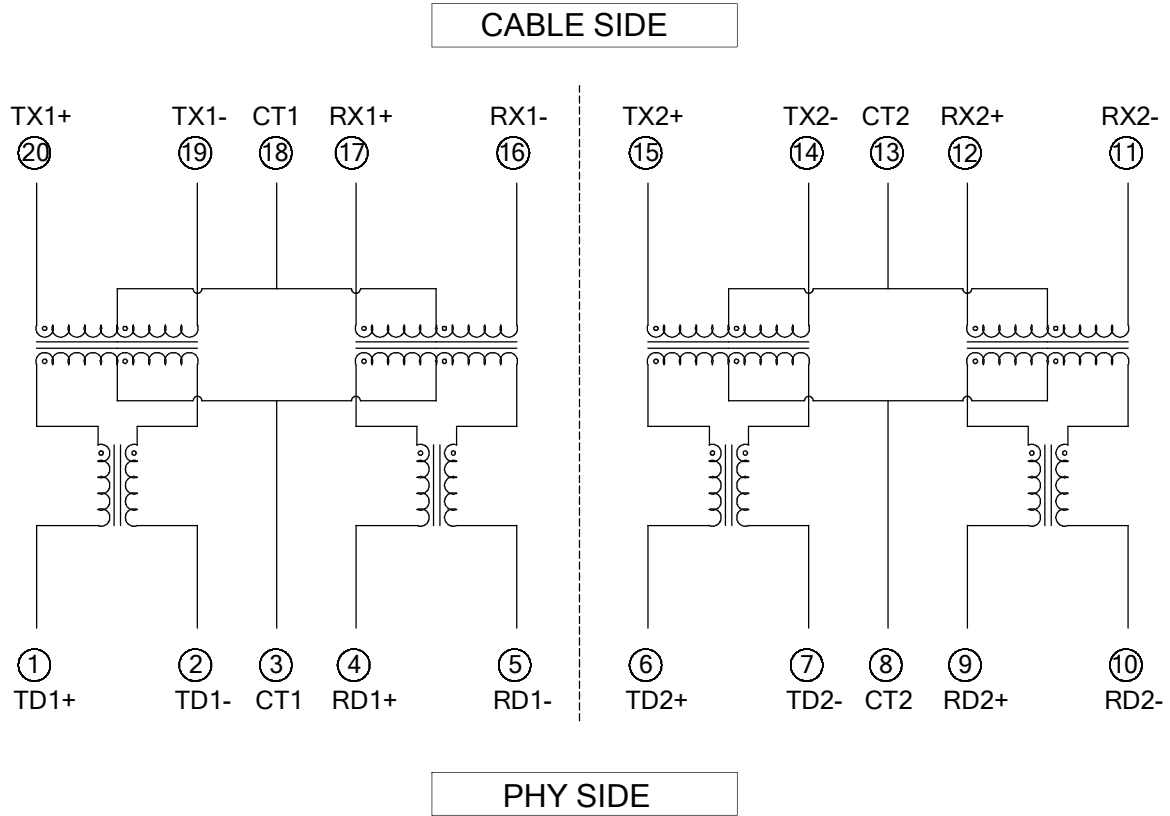


UNIT	mm	inch
a	22.86	0.900
b	7.62	0.300
c	2.54	0.100
d	$\varnothing 0.90$	0.035

Drawn	Allen.Yu	Designed	Allen.Yu	Approved	James.Cheng
-------	----------	----------	----------	----------	-------------

# Schematics

RT21H01



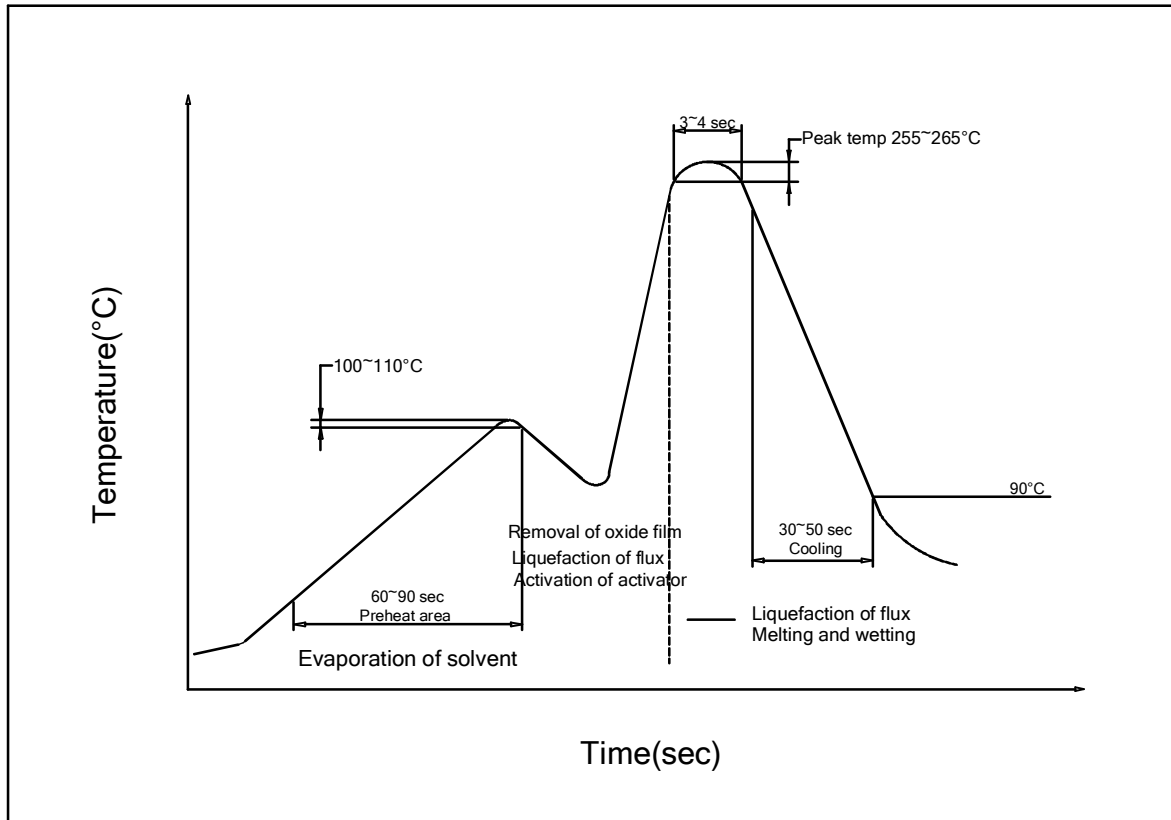
# Electrical Specification @ 25°C, Humidity 65% RH

Inductance @ Phy side(OCL)  
 100KHz, 0.1V, 8mA DC Bias  
 350uH MIN

Part Number	Turns Ratio		Insertion Loss dB MAX	Return Loss dB MIN			Crosstalk dB MIN	Hipot Vrms, Sec
	100KHz							
	TX	RX	1MHz-100MHz			1-100MHz	Pri To Sec @60Hz,1mA	
RT21H01	1:1±3%	1:1±3%	-1.0	-16	-14	-12	-28	1500, 60

Operating Temperature: 0°C to +70°C  
 Storage Temperature: -25°C to +105°C  
 JSDEC Moisture: Level 1.

## Wave Soldering



- Tip Temperature :265°C MAX.
- Tip Temperature Time: 4sec MAX.