

SMD Ceramic Multilayer Chip Inductors – LTI-060303 Series

Electrical Characteristics

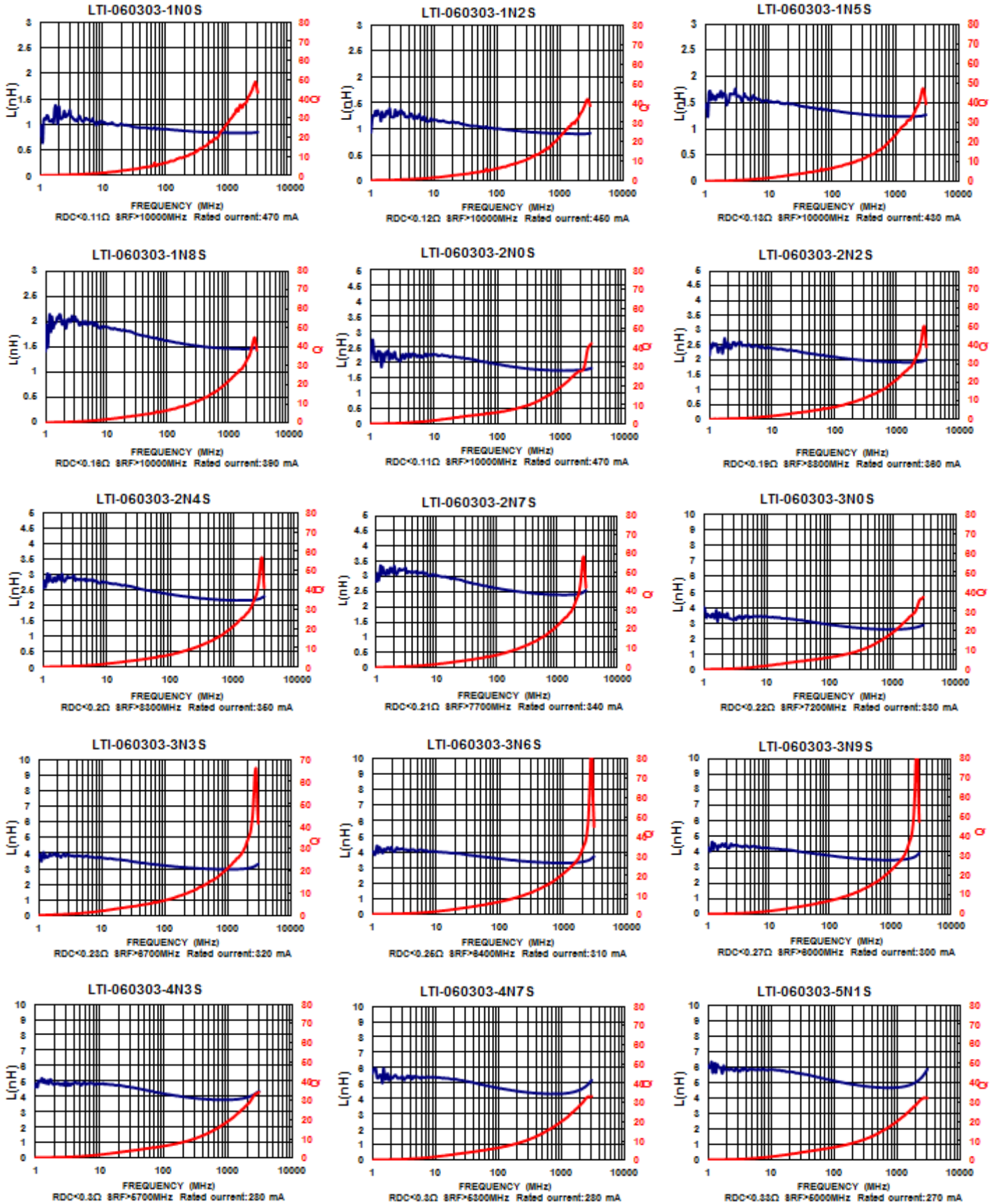
Part Number	Inductance (nH)	Tolerance (±%)	Test Frequency (MHz)	Q Min	SRF (MHz) Min	RDC (Ω) Max	Rated Current (mA) Max
LTI-060303-1N0S	1.0	±0.3nH	100	4	>10000	0.11	470
LTI-060303-1N2S	1.2	±0.3nH	100	4	>10000	0.12	450
LTI-060303-1N5S	1.5	±0.3nH	100	4	>10000	0.13	430
LTI-060303-1N8S	1.8	±0.3nH	100	4	>10000	0.16	390
LTI-060303-2N0S	2.0	±0.3nH	100	4	>10000	0.17	380
LTI-060303-2N2S	2.2	±0.3nH	100	4	8800	0.19	360
LTI-060303-2N4S	2.4	±0.3nH	100	4	8300	0.20	350
LTI-060303-2N7S	2.7	±0.3nH	100	4	7700	0.21	340
LTI-060303-3N0S	3.0	±0.3nH	100	4	7200	0.22	330
LTI-060303-3N3S	3.3	±0.3nH	100	4	6700	0.23	320
LTI-060303-3N6S	3.6	±0.3nH	100	4	6400	0.25	310
LTI-060303-3N9S	3.9	±0.3nH	100	4	6000	0.27	300
LTI-060303-4N3S	4.3	±0.3nH	100	4	5700	0.30	280
LTI-060303-4N7S	4.7	±0.3nH	100	4	5300	0.30	280
LTI-060303-5N1S	5.1	±0.3nH	100	4	5000	0.33	270
LTI-060303-5N6S	5.6	±0.3nH	100	4	4600	0.36	260
LTI-060303-6N2S	6.2	±0.3nH	100	4	4200	0.38	250
LTI-060303-6N8□	6.8	±0.3nH/5	100	4	3900	0.39	250
LTI-060303-7N5J	7.5	5	100	4	3600	0.41	240
LTI-060303-8N2□	8.2	±0.3nH/5	100	4	3400	0.45	230
LTI-060303-9N1J	9.1	5	100	4	3200	0.48	220
LTI-060303-10NJ	10	5	100	4	2900	0.51	220
LTI-060303-12NJ	12	5	100	4	2700	0.68	190
LTI-060303-15NJ	15	5	100	4	2300	0.71	180
LTI-060303-18NJ	18	5	100	4	2100	0.81	170
LTI-060303-22NJ	22	5	100	4	1800	1.00	150
LTI-060303-27NJ	27	5	100	4	1800	1.35	120
LTI-060303-33NJ	33	5	100	4	1700	1.47	110
LTI-060303-39NJ	39	5	100	4	1500	1.72	100
LTI-060303-47NJ	47	5	100	4	1300	1.90	100
LTI-060303-56NJ	56	5	100	4	1100	2.27	80
LTI-060303-68NJ	68	5	100	4	1100	2.66	80
LTI-060303-82NJ	82	5	100	4	1000	3.37	70
LTI-060303-R10J	100	5	100	4	900	3.74	60

Note: When ordering, please specify tolerance code. Tolerance : S=±0.3nH , J=±5%

- Operating temperature range - 55°C ~ 125°C(Including self - temperature rise)
- Rate Current :Applied the current to coils, the temperature rise shall not be more than 30°C
- Residual impedance of short chip : 0.19nH
- Measure Equipment :
L & Q : Agilent E4991A+Agilent 16197A
SRF : Agilent E4991A or HP19196C
RDC : HP4338B or CHEN HWA 502

SMD Ceramic Multilayer Chip Inductors – LTI-060303 Series

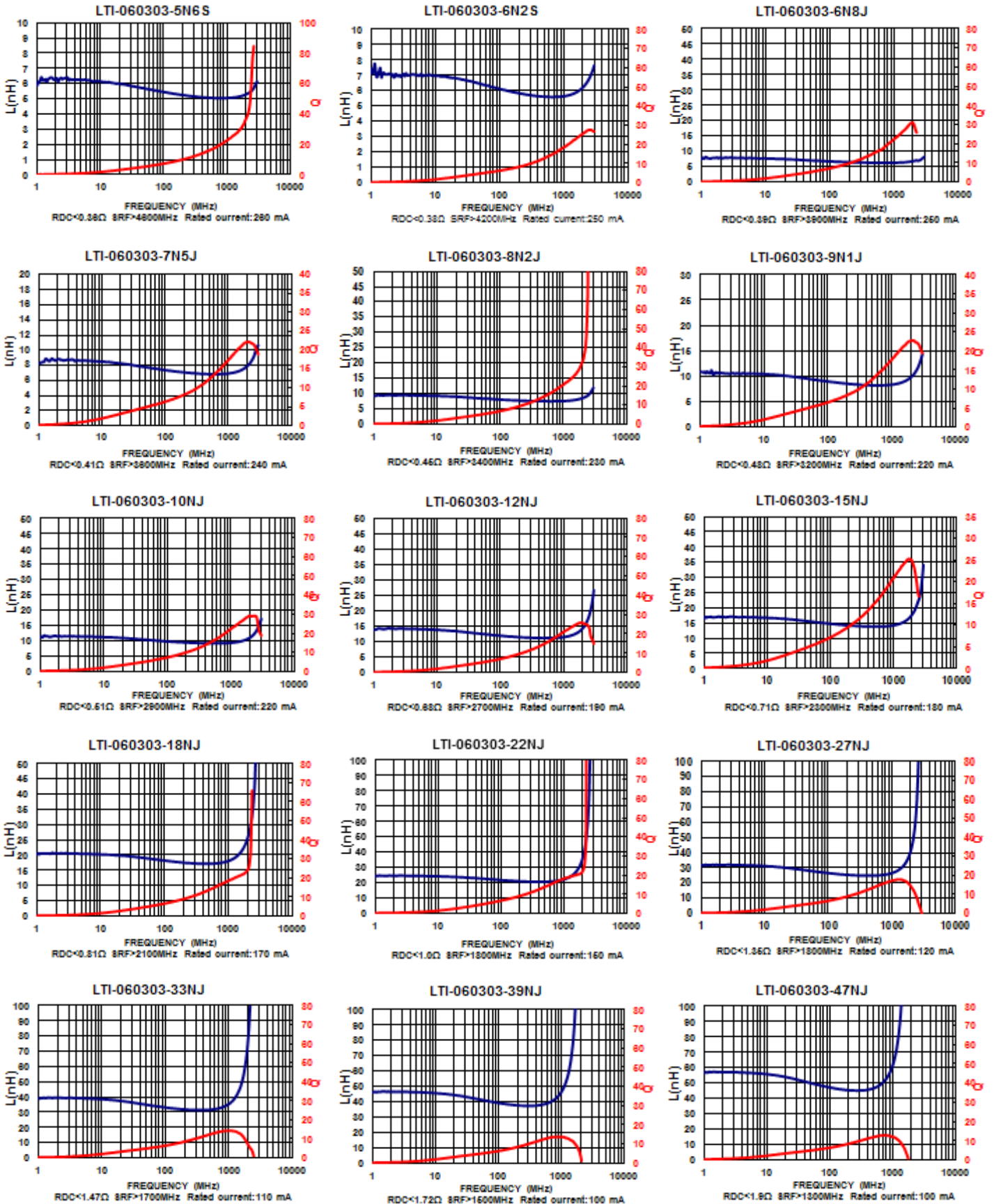
Test Instruments : Agilent E4991A Material/Impedance Analyzer



Please be sure to request approval specifications that provide further details of the products. Kindly note that the content of these specifications are subject to change or may be discontinued without prior notice. This product may not be designed/used in medical or high risk applications without Mag.Layers approval. Please contact our sales department before ordering.

SMD Ceramic Multilayer Chip Inductors – LTI-060303 Series

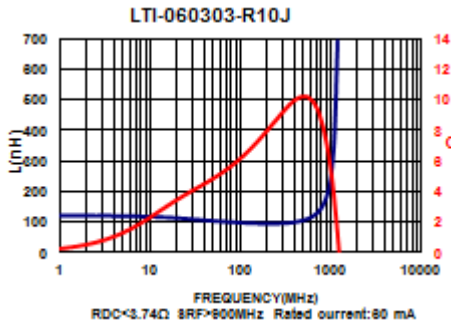
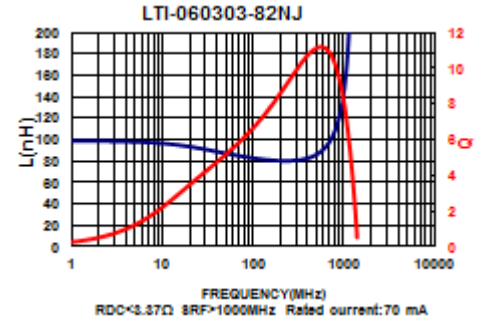
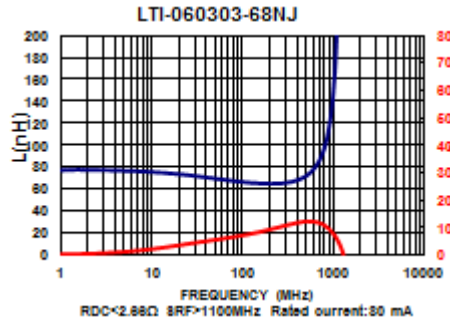
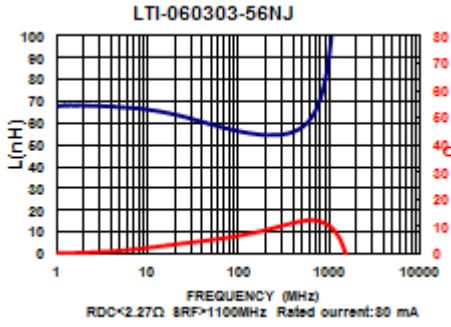
Test Instruments : Agilent E4991A Material/Impedance Analyzer



Please be sure to request approval specifications that provide further details of the products. Kindly note that the content of these specifications are subject to change or may be discontinued without prior notice. This product may not be designed/used in medical or high risk applications without Mag.Layers approval. Please contact our sales department before ordering.

SMD Ceramic Multilayer Chip Inductors – LTI-060303 Series

Test Instruments : Agilent E4991A Material/Impedance Analyzer



Please be sure to request approval specifications that provide further details of the products. Kindly note that the content of these specifications are subject to change or may be discontinued without prior notice. This product may not be designed/used in medical or high risk applications without Mag.Layers approval. Please contact our sales department before ordering.

LTI Series



The LTI Series is a type of ceramic chip inductor produced using the multilayer technology. The series provides excellent Q factor and SRF characteristics and is suitable for high frequency applications.

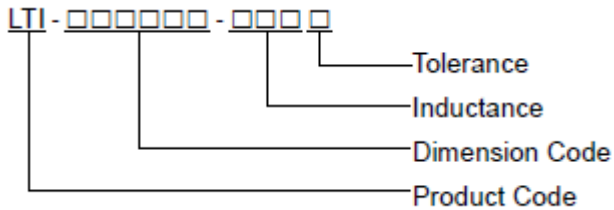
Features

- RoHS compliant
- Excellent Q factor and SRF characteristics
- Small size of 1005/1608 is suitable for small portable devices
- Supports operating frequency up to 6GHz with nominal inductance values from 1.0nH to 470nH.

Applications

- RF resonance and impedance matching circuit
- RF and wireless communication
- Information technology equipment, computers, telecommunications, radar detectors, automotive electronics, cellular phones, pagers, PDAs, keyless remote systems
- L-C filter configurations

Product Identification

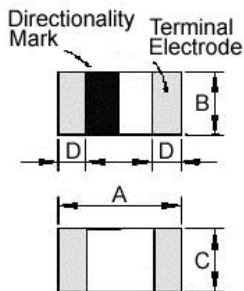


- Product series identification:

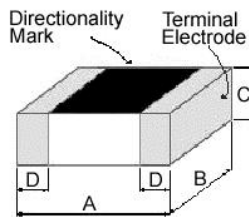
060303	Top side half mark.
100505	Top side full mark.
160808	Top side full mark.

Shape and Dimensions

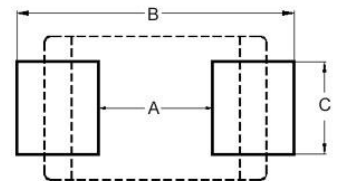
060303



100505 / 160808



Recommended Pattern



Dimensions in mm

TYPE	A	B	C	D
060303	0.6 ± 0.03	0.3 ± 0.03	0.3 ± 0.03	0.15 ± 0.05
100505	1.0 ± 0.10	0.5 ± 0.10	0.5 ± 0.10	0.25 ± 0.10
160808	1.6 ± 0.15	0.8 ± 0.15	0.8 ± 0.15	0.3 ± 0.2

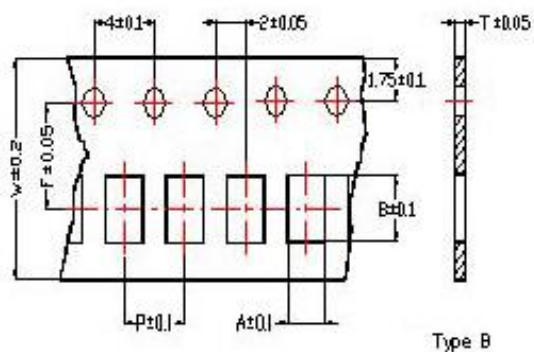
Dimensions in mm

TYPE	A	B	C
060303	0.3	0.75 ~ 1.05	0.3
100505	0.4	1.2 ~ 1.4	0.5
160808	0.7 ~ 0.8	1.8 ~ 2.0	0.6 ~ 0.8

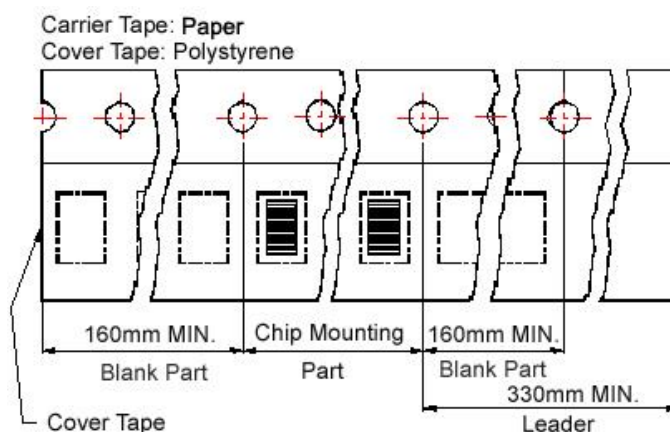
SMD Ceramic Multilayer Chip Inductors - LTI Series

Packaging Specifications

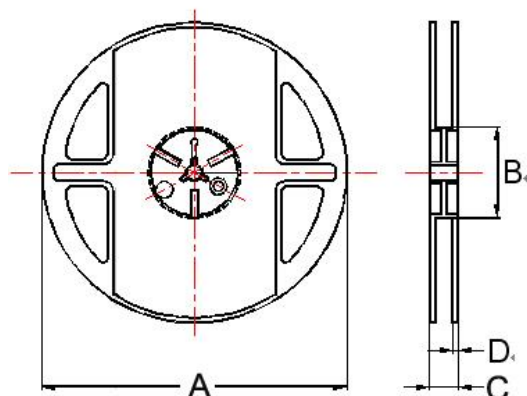
Tape Dimensions



Tape Material



Reel Dimensions



Dimensions in mm

TYPE	Tape Dimensions						Reel Dimensions				Quantity PCS / Reel
	A	B	T	W	P	F	A	B	C	D	
060303	0.37	0.67	0.42	8	2	3.5	180	60	13	1.5	15000
100505	0.62	1.12	0.60	8	2	3.5	178	60	12	1.5	10000
160808	1.00	1.80	0.95	8	4	3.5	178	60	12	1.5	4000